

	<b>Charakterizácia odpadov. Návod na správnu prax na tepelné procesy.</b>	<b>TNI CEN/TR 16788</b>  83 8219
--	---	--

Characterization of sludges - Guideline of good practice for thermal processes

Táto technická normalizačná informácia obsahuje anglickú verziu CEN/TR 16788:2014.  
This Technical standard information includes the English version of CEN/TR 16788:2014.

Táto technická normalizačná informácia bola oznámená vo Vestníku ÚNMS SR č. 03/15

**120397**

---

Úrad pre normalizáciu, metrológiu a skúšobníctvo SR, odbor SÚTN, 2015  
Tento dokument a ani jeho časti sa nesmú rozmnožovať a rozširovať v akejkoľvek podobe  
a akýmkoľvek prostriedkami bez písomného povolenia ÚNMS SR.

TECHNICAL REPORT

**CEN/TR 16788**

RAPPORT TECHNIQUE

TECHNISCHER BERICHT

November 2014

ICS 13.030.20

Supersedes CEN/TR 13767:2004, CEN/TR 13768:2004

English Version

## Characterization of sludges - Guideline of good practice for thermal processes

Caractérisation des boues - Lignes directrices relatives aux bonnes pratiques pour les procédés thermiques

Charakterisierung von Schlämmen - Anleitung für die gute fachliche Praxis thermischer Prozesse

This Technical Report was approved by CEN on 25 November 2014. It has been drawn up by the Technical Committee CEN/TC 308.

CEN members are the national standards bodies of Austria, Belgium, Bulgaria, Croatia, Cyprus, Czech Republic, Denmark, Estonia, Finland, Former Yugoslav Republic of Macedonia, France, Germany, Greece, Hungary, Iceland, Ireland, Italy, Latvia, Lithuania, Luxembourg, Malta, Netherlands, Norway, Poland, Portugal, Romania, Slovakia, Slovenia, Spain, Sweden, Switzerland, Turkey and United Kingdom.



EUROPEAN COMMITTEE FOR STANDARDIZATION  
COMITÉ EUROPÉEN DE NORMALISATION  
EUROPÄISCHES KOMITEE FÜR NORMUNG

**CEN-CENELEC Management Centre: Avenue Marnix 17, B-1000 Brussels**

<b>Contents</b>		<b>Page</b>
Foreword.....		4
Introduction .....		5
1 Scope .....		8
2 Normative references .....		8
3 Terms and definitions .....		8
4 Abbreviations .....		9
5 Regulatory aspects.....		10
6 Sludge properties .....		11
6.1 General.....		11
6.2 Physico-chemical characteristics .....		11
6.2.1 General.....		11
6.2.2 Dry matter .....		11
6.2.3 Loss on ignition .....		12
6.2.4 Calorific value .....		12
6.2.5 Grease, scum and screening.....		13
6.2.6 Physical consistency and others .....		13
6.3 Chemical characteristics .....		13
6.3.1 General.....		13
6.3.2 Sulphur .....		14
6.3.3 Phosphorus .....		14
6.3.4 Nitrogen .....		14
6.3.5 Chlorine and other halogen .....		14
6.3.6 Organic micro pollutants .....		14
6.3.7 Trace elements.....		15
7 Thermal processes fundamentals.....		15
7.1 Incineration.....		15
7.2 Gasification .....		16
7.3 Pyrolysis .....		17
7.4 Wet (air) oxidation.....		17
7.5 Others .....		18
8 Equipment .....		18
8.1 Incineration devices .....		18
8.1.1 General.....		18
8.1.2 Fluidized Bed Furnace (FBF) .....		20
8.1.3 Multiple Hearth Furnace (MHF).....		22
8.1.4 Combination of FBF and MHF .....		22
8.1.5 Others .....		22
8.2 Gasification devices .....		23
8.3 Pyrolysis Devices .....		25
8.4 Wet air oxidation devices.....		26
8.5 Design aspects.....		26
8.6 Auxiliary equipment .....		27
8.6.1 General.....		27
8.6.2 Transport, receiving area, storage and feeding systems .....		27
8.6.3 Heat recovery .....		27
8.6.4 Flue gas cleaning.....		28
8.6.5 Ash and other residue handling.....		28
8.6.6 Wastewater treatment .....		28
8.6.7 Process monitoring .....		29

<b>9</b>	<b>Operational aspects</b> .....	<b>29</b>
<b>9.1</b>	<b>General</b> .....	<b>29</b>
<b>9.2</b>	<b>Incineration</b> .....	<b>30</b>
<b>9.2.1</b>	<b>General</b> .....	<b>30</b>
<b>9.2.2</b>	<b>Fluidized Bed Furnace (FBF)</b> .....	<b>30</b>
<b>9.2.3</b>	<b>Multiple Hearth Furnace (MHF)</b> .....	<b>32</b>
<b>9.3</b>	<b>Technologies without operational background in sewage sludge: Gasification/ Pyrolysis</b> .....	<b>33</b>
<b>9.3.1</b>	<b>General</b> .....	<b>33</b>
<b>9.3.2</b>	<b>Hazards</b> .....	<b>33</b>
<b>10</b>	<b>Management of energy and material products</b> .....	<b>33</b>
<b>10.1</b>	<b>General</b> .....	<b>33</b>
<b>10.2</b>	<b>Incineration</b> .....	<b>33</b>
<b>10.3</b>	<b>Gasification / Pyrolysis</b> .....	<b>35</b>
<b>10.4</b>	<b>Resume 10.1 through 10.3</b> .....	<b>37</b>
<b>10.5</b>	<b>Wet Oxidation</b> .....	<b>37</b>
<b>11</b>	<b>Management of residues</b> .....	<b>37</b>
<b>11.1</b>	<b>General</b> .....	<b>37</b>
<b>11.2</b>	<b>Flue Gas</b> .....	<b>37</b>
<b>11.2.1</b>	<b>Composition/parameters</b> .....	<b>37</b>
<b>11.2.2</b>	<b>Equipment</b> .....	<b>39</b>
<b>11.3</b>	<b>Ashes</b> .....	<b>42</b>
<b>11.3.1</b>	<b>Composition/Parameters</b> .....	<b>42</b>
<b>11.3.2</b>	<b>Equipment</b> .....	<b>42</b>
<b>11.4</b>	<b>Wastewater</b> .....	<b>42</b>
<b>12</b>	<b>Economic aspects</b> .....	<b>43</b>
<b>13</b>	<b>Co-management with other organic wastes</b> .....	<b>43</b>
<b>13.1</b>	<b>General</b> .....	<b>43</b>
<b>13.2</b>	<b>Specific considerations</b> .....	<b>44</b>
<b>13.3</b>	<b>Additional storage and transports aspects</b> .....	<b>49</b>
<b>13.3.1</b>	<b>General</b> .....	<b>49</b>
<b>13.3.2</b>	<b>Storage</b> .....	<b>49</b>
<b>13.3.3</b>	<b>Transport</b> .....	<b>50</b>
<b>14</b>	<b>Assessment of impacts</b> .....	<b>50</b>
<b>14.1</b>	<b>General</b> .....	<b>50</b>
<b>14.2</b>	<b>Environmental aspects</b> .....	<b>51</b>
<b>14.3</b>	<b>Economic aspects</b> .....	<b>51</b>
<b>14.4</b>	<b>Social aspects</b> .....	<b>51</b>
	<b>Annex A (informative) Emission limit values</b> .....	<b>53</b>
	<b>Annex B (normative) Calorific Value calculations</b> .....	<b>55</b>
	<b>Annex C (informative) Tables</b> .....	<b>57</b>
	<b>Annex D (normative) Various systems to input sludge into a household waste incineration plant</b> .....	<b>59</b>
<b>D.1</b>	<b>General</b> .....	<b>59</b>
<b>D.2</b>	<b>Sludge whose dry matter content &lt; 35 %</b> .....	<b>59</b>
<b>D.3</b>	<b>Sludge whose dryness is &gt; 65 %</b> .....	<b>59</b>
<b>D.4</b>	<b>Sludge whose dry matter content between 35 % to 65 %</b> .....	<b>60</b>
<b>D.5</b>	<b>Drying the sludge in the household waste incineration plant</b> .....	<b>60</b>
	<b>Bibliography</b> .....	<b>61</b>

## **Foreword**

This document (CEN/TR 16788:2014) has been prepared by Technical Committee CEN/TC 308 "Characterization of sludge", the secretariat of which is held by AFNOR.

This document supersedes CEN/TR 13767:2004 and CEN/TR 13768:2004.

## Introduction

It is recognized that wastewater sludge is a potential source of valuable resources. Material recycling is higher in the waste hierarchy (ref. 2008/98/EC Directive) than recovery (energy and material). Sludge incineration and other organic matter treatments by thermal processes (gasification, pyrolysis and wet oxidation) should deal with materials which do not meet beneficial use requirements. They represent a consistent year round solution. To decide which type of solution is appropriate for a particular sludge, Figure 1 should be consulted.

Thermal processes involve, among others, reduction of volume and weight, highest destruction of toxic organic compounds, possible recovery of phosphorus and other useful materials. Drawbacks include high costs and complexity of plant operation.

In all cases, the energy balance (including energy for removing water etc.) and carbon footprint of the processes should be calculated to verify the environmental benefit of the process.

A good performance of a thermal processing plant also depends upon the provision of proper auxiliary equipment and devices, which include receiving and storage systems, pre-treatments equipment, feeding system, flue gas cleaning, heat recovery, ash handling, wastewater disposal and process monitoring.

The purpose of this Technical Report is to describe good practice for sludge incineration and other organic matter treatments by thermal processes in order to ensure a safe and economical operation. The main goals are to:

- describe the principal design parameters relevant to different process schemes;
- assess the operating procedures able to perform optimal energy balance, emissions control and equipment durability;
- provide the responsible authorities with well-established and easily applicable protocols for control purposes;
- promote the diffusion of good practice;
- contribute to taking appropriate decisions.

Priority should be given to reduction of pollutants at the origin and to recover, if technically and economically feasible, valuable substances (e.g. phosphorus) from sludge and derived products.

As part of a process and company quality approach, the relevant issues are therefore:

- exploiting the operating data and the statutory inspections carried out;
- rendering the process reliable, optimizing and of perpetuating it, as well as guaranteeing a permanent development;
- maintaining a climate of confidence between the authorities, the sludge producers, the transporters, the incineration plant and waste disposal site operators and allowing the services to be provided on a contractual basis.

The local considerations to be taken into account are:

- the adoption of a more convenient solution with respect to other options;
- the geographical context, the client population and therefore the potential input material as well as the expected developments;

**CEN/TR 16788:2014 (E)**

- the proximity of the sewage treatment plant and the local transportation network;
- the capacity of treatment plants.

All of the recommendations of this document constitute a framework within which the thermal processes can be proposed in addition to and/or as a substitution for land utilization, landfilling when allowed, or any other process when relevant situations occur and appropriate conditions are met.

The management of sludges both upstream and downstream of the treatment process to ensure that it is suitable for the outlets available is outlined in CEN/TS 13714:2013.

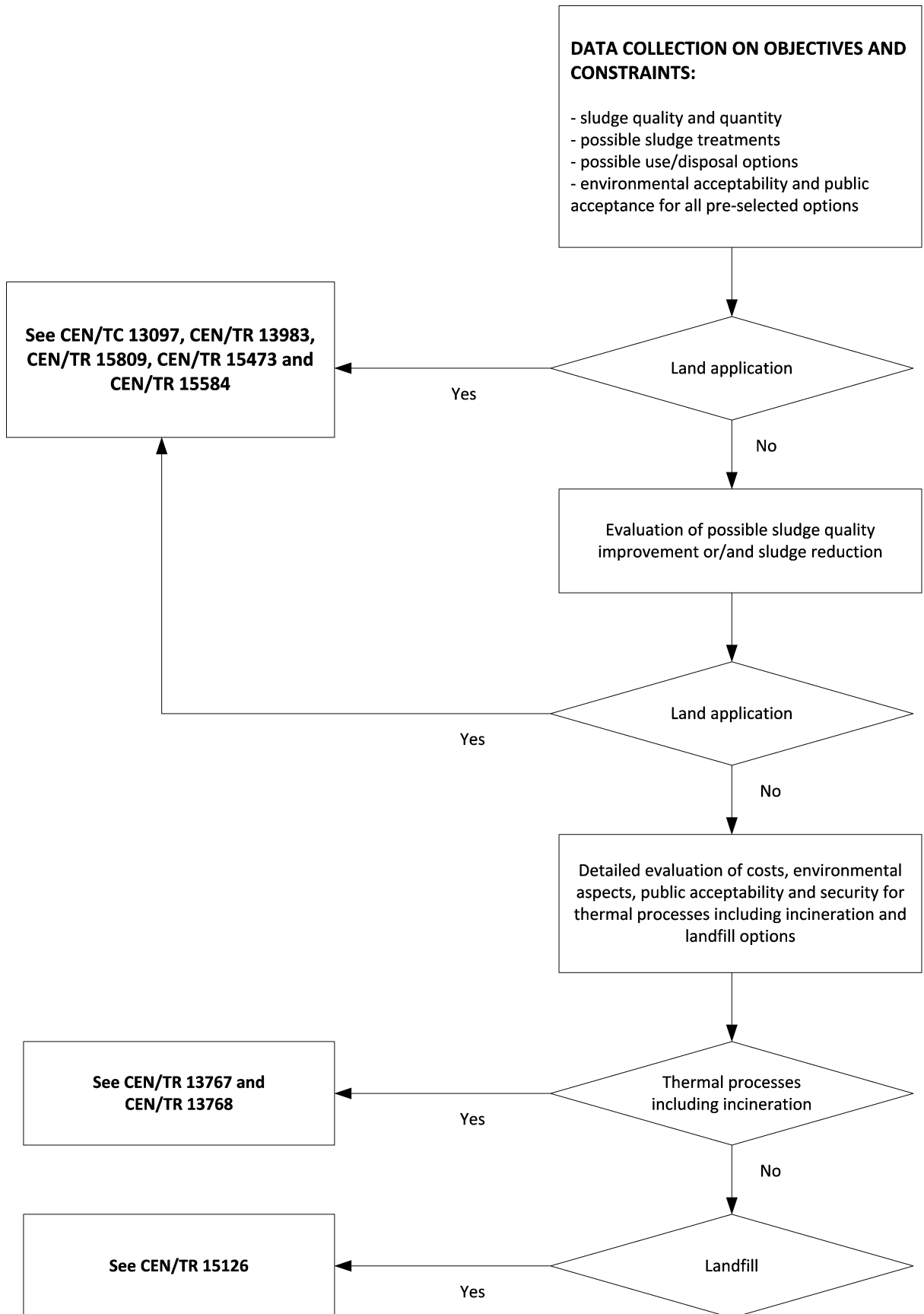


Figure 1 — A basic scheme for deciding on sewage sludge use/disposal options and the relevant CEN/TC 308 guidance documents



## **1 Scope**

This Technical Report describes good practice for the incineration and other organic matter treatment by thermal processes of sludges.

Thermal drying, thermal conditioning and thermal hydrolysis are excluded.

This Technical Report is applicable for sludges described in the scope of CEN/TC 308 specifically derived from:

- storm water handling;
- night soil;
- urban wastewater collecting systems;
- urban wastewater treatment plants;
- treating industrial wastewater similar to urban wastewater (as defined in Directive 91/271/EEC);

but excluding hazardous sludges from industry.

## **2 Normative references**

Not applicable.

**koniec náhľadu – text ďalej pokračuje v platenej verzii STN**