

STN	Potravinárske stroje. Potravinárske dávkovače. Bezpečnostné a hygienické požiadavky.	STN EN 15180 51 3051
------------	---	--

Food processing machinery - Food depositors - Safety and hygiene requirements

Táto norma obsahuje anglickú verziu európskej normy.
This standard includes the English version of the European Standard.

Táto norma bola oznámená vo Vestníku ÚNMS SR č. 04/15

Obsahuje: EN 15180:2014

120692

Úrad pre normalizáciu, metrológiu a skúšobníctvo SR, odbor SÚTN, 2015
Podľa zákona č. 264/1999 Z. z. v znení neskorších predpisov sa môžu slovenské technické normy
rozmnžovať a rozširovať iba so súhlasom Úradu pre normalizáciu, metrológiu a skúšobníctvo SR.

EUROPEAN STANDARD
NORME EUROPÉENNE
EUROPÄISCHE NORM

EN 15180

November 2014

ICS 67.260

English Version

**Food processing machinery - Food depositors - Safety and
hygiene requirements**

Machines pour les produits alimentaires - Doseuses
alimentaires - Prescriptions relatives à la sécurité et
l'hygiène

Nahrungsmittelmaschinen -
Nahrungsmittelportioniermaschinen - Sicherheits- und
Hygieneanforderungen

This European Standard was approved by CEN on 13 September 2014.

CEN members are bound to comply with the CEN/CENELEC Internal Regulations which stipulate the conditions for giving this European Standard the status of a national standard without any alteration. Up-to-date lists and bibliographical references concerning such national standards may be obtained on application to the CEN-CENELEC Management Centre or to any CEN member.

This European Standard exists in three official versions (English, French, German). A version in any other language made by translation under the responsibility of a CEN member into its own language and notified to the CEN-CENELEC Management Centre has the same status as the official versions.

CEN members are the national standards bodies of Austria, Belgium, Bulgaria, Croatia, Cyprus, Czech Republic, Denmark, Estonia, Finland, Former Yugoslav Republic of Macedonia, France, Germany, Greece, Hungary, Iceland, Ireland, Italy, Latvia, Lithuania, Luxembourg, Malta, Netherlands, Norway, Poland, Portugal, Romania, Slovakia, Slovenia, Spain, Sweden, Switzerland, Turkey and United Kingdom.



EUROPEAN COMMITTEE FOR STANDARDIZATION
COMITÉ EUROPÉEN DE NORMALISATION
EUROPÄISCHES KOMITEE FÜR NORMUNG

CEN-CENELEC Management Centre: Avenue Marnix 17, B-1000 Brussels

Contents

Page

Foreword.....	4
Introduction	5
1 Scope	6
1.1 General.....	6
1.2 Types of food depositors	6
2 Normative references	9
3 Terms and definitions	11
4 List of significant hazards	12
4.1 General.....	12
4.2 General food depositor hazards.....	12
4.3 Hazards associated with a piston depositor.....	16
4.4 Hazards associated with a chamber depositor	18
4.5 Hazards associated with a roller depositor	20
4.6 Hazards associated with a pump depositor.....	21
4.7 Hazards associated with a screw depositor	23
5 Safety requirements and/protective measures.....	24
5.1 General.....	24
5.2 General requirements for food depositors	24
5.3 Safety requirements for a piston depositor	32
5.4 Safety requirements for a chamber depositor	34
5.5 Safety requirements for a roller depositor	34
5.6 Safety requirements for a pump depositor	35
5.7 Safety requirements for a screw depositor.....	36
6 Verification of the safety requirements and/or protective measures	37
6.1 Introduction	37
6.2 Visual inspections	40
6.3 Function tests	40
6.4 Measurements.....	40
6.5 Design Verification	41
6.6 Hazardous product and cleaning material related requirements	41
7 Information for use	41
7.1 General.....	41
7.2 Signal and warning devices.....	41
7.3 Accompanying documents (in particular the instruction handbook)	42
7.4 Marking	43
Annex A (normative) Noise test code	44
A.1 Scope	44
A.2 Terms and definitions	44
A.3 Determination of emission sound pressure level	44
A.4 Sound power level determination	44
A.5 Installation and mounting conditions.....	45
A.6 Operating conditions.....	45
A.7 Measurement uncertainties	45
A.8 Information to be recorded	46
A.9 Information to be reported	46

A.10 Declaration and verification of noise emission values	46
Annex B (informative) Correlation between Clauses 4, 5 and 7	48
Annex ZA (informative) Relationship between this European Standard and the Essential Requirements of EU Directive 2006/42/EC on Machinery	51
Bibliography	52

Foreword

This document (EN 15180:2014) has been prepared by Technical Committee CEN/TC 153 “Machinery intended for use with foodstuffs and feed”, the secretariat of which is held by DIN.

This European Standard shall be given the status of a national standard, either by publication of an identical text or by endorsement, at the latest by May 2015 and conflicting national standards shall be withdrawn at the latest by May 2015.

Attention is drawn to the possibility that some of the elements of this document may be the subject of patent rights. CEN [and/or CENELEC] shall not be held responsible for identifying any or all such patent rights.

This document has been prepared under a mandate given to CEN by the European Commission and the European Free Trade Association, and supports essential requirements of EU Directive 2006/42/EC.

For relationship with EU Directive 2006/42/EC, see informative Annex ZA, which is an integral part of this document.

According to the CEN-CENELEC Internal Regulations, the national standards organizations of the following countries are bound to implement this European Standard: Austria, Belgium, Bulgaria, Croatia, Cyprus, Czech Republic, Denmark, Estonia, Finland, Former Yugoslav Republic of Macedonia, France, Germany, Greece, Hungary, Iceland, Ireland, Italy, Latvia, Lithuania, Luxembourg, Malta, Netherlands, Norway, Poland, Portugal, Romania, Slovakia, Slovenia, Spain, Sweden, Switzerland, Turkey and the United Kingdom.

Introduction

Food depositors are used extensively in Europe, in commercial and industrial food preparation applications. They present some health and safety hazards that have the potential to cause serious injury.

This document is a Type C standard as stated in EN ISO 12100.

The machinery concerned and the extent to which hazards, hazardous situations and events are covered are indicated in the scope of this standard.

When provisions of this Type C-standard are different from those, which are stated in Type A- or -B-Standards, the provisions of this Type C-standard take precedence over the provisions of the other standards for machines that have been designed and built according to the provisions of this Type C-standard.

1 Scope

1.1 General

This European Standard deals with all significant hazards, hazardous situations and events relevant to food depositors as defined in 1.2.2 to 1.2.6 and the equipment typically integrated into them, i.e. product pumps, product elevators, conveyors and indexing mechanisms, when they are used as intended and under conditions of misuse which are reasonably foreseeable by the manufacturer (see Clause 4).

This European Standard deals with the significant hazards, hazardous situations and events during transport, assembly and installation, commissioning, use and decommissioning as defined in EN ISO 12100.

NOTE 1 According to the clause which is referred to, “use” includes “setting, teaching/programming or process changeover, operation, cleaning, fault finding and maintenance”.

NOTE 2 Although this standard is intended to apply to depositors used in the food industry, many of its requirements can also be used for similar machines used in other industries.

This European Standard is not applicable to the following machines:

- auger depositors or auger fillers and gravimetric filling machines, safety requirements for these machines are contained in EN 415-3;
- automatic dough dividers, safety requirements for these machines are contained in EN 12042;
- filling machines for sausages, safety requirements for these machines are contained in EN 12463;
- mincing machines, safety requirements for these machines are contained in EN 12331;
- food depositors that are powered exclusively by manual effort.

This document does not deal with the hazards related to the use of food depositors in a potentially explosive atmosphere.

This European Standard is not applicable to food depositors that were manufactured before the date of its publication as a European Standard.

1.2 Types of food depositors

1.2.1 General

This European Standard deals with five different types of food depositors. These machines can be free standing machines or be assemblies incorporated into other machines e.g. pie and tart machines. Food depositors may work fully automatically integrated with a product conveyor or product indexing mechanism or semi-automatically discharging a deposit when required by an operator.

1.2.2 Piston depositor

A piston depositor typically comprises a hopper, a rotary valve, a product measuring chamber in the form of a piston and a product dispensing valve. Some piston depositors incorporate several product measuring chambers and dispensing valves. Some designs dispense the product directly from the rotary valve without the use of a separate product dispensing valve. The volume of product dispensed is varied by altering the stroke of the product measuring chamber piston. Piston depositors are used to fill liquids, liquids containing solids in suspension and pastes. The product dispensing valve may be attached rigidly to the depositor or

using a flexible pipe and in some cases is held by the operator. Figure 1 shows the typical cross section of a piston depositor.

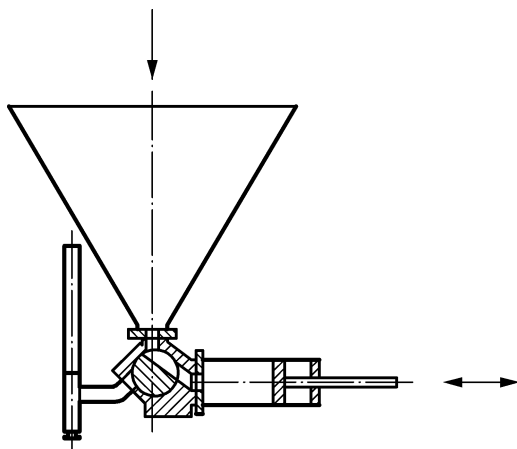


Figure 1 — Piston depositor

1.2.3 Chamber depositor

A chamber depositor comprises a hopper feeding one or more product measuring chambers that are filled under gravity from the top. When the chamber has been filled with product the flow of product is stopped either by moving the chamber or using a product cutting device. The chamber is then discharged through the bottom of the chamber either by moving the chamber or by moving a plate in the base of the chamber. The volume of product dispensed is varied by altering the volume of the chamber. Chamber depositors are typically used to deposit free-flowing products like cooked rice or pasta. Figure 2 shows the typical cross section of a chamber depositor.

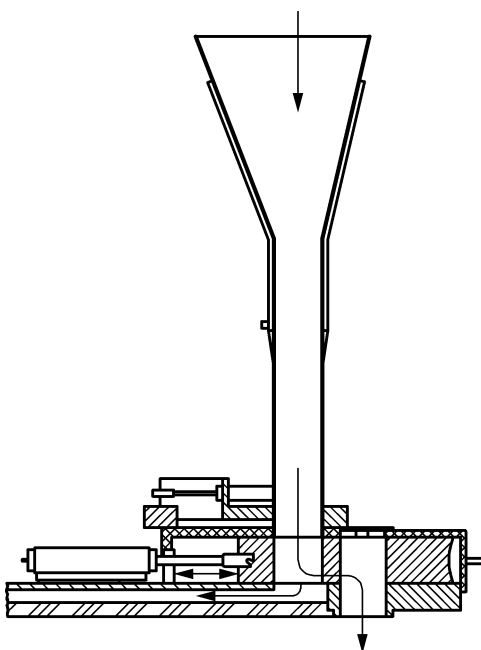


Figure 2 — Chamber depositor

1.2.4 Roller depositor

A roller depositor typically comprises a hopper that feeds product to two or more fluted contra-rotating rollers. These rollers force the product through one or more dies that shape the product. The product is then separated using a product cutting device like a wire cut mechanism. On some designs of the machine the dies are moved while the product is dispensed to produce a shaped product. The volume of product dispensed is varied by altering the timing of the product cut-off device. Roller depositors are typically used to deposit dough or confectionery products. Figure 3 shows the typical cross section of a roller depositor.

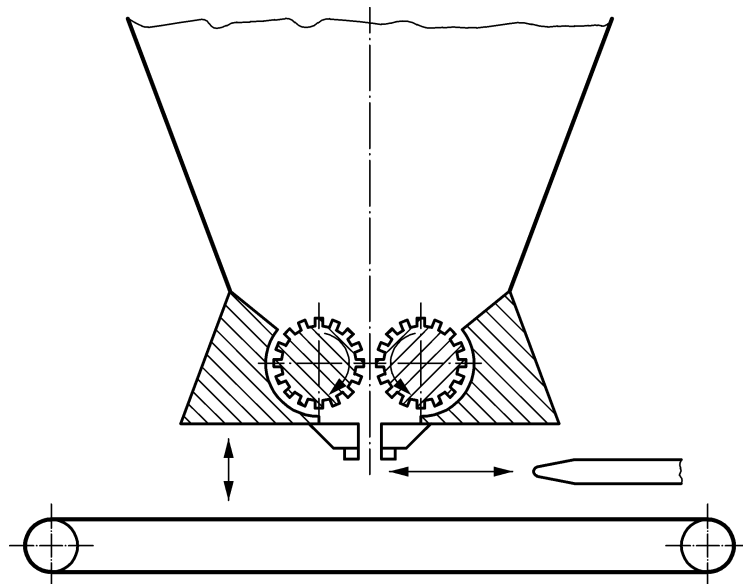


Figure 3 — Roller depositor

1.2.5 Pump depositor

A pump depositor comprises a hopper that feeds a pump which in turn feeds pipe-work on which are mounted one or more product dispensing valves. The dispensing valves may remain fixed, move up and down or from side to side in synchronization with a product conveyor. The volume of product dispensed is varied by altering the length of time that the dispensing valves are open. Pump depositors are typically used to deposit liquids or liquids containing finely divided solids. Figure 4 shows the typical cross section of a pump depositor.

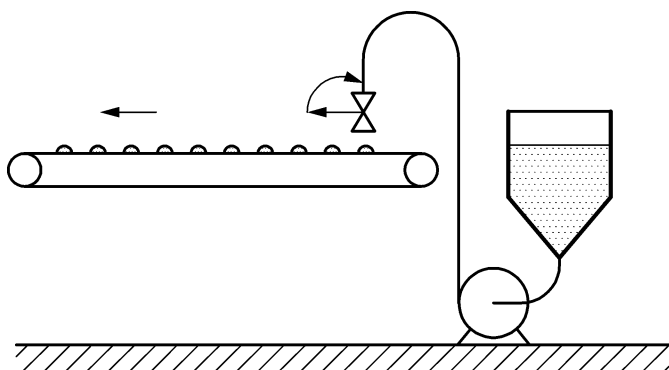


Figure 4 — Pump depositor

1.2.6 Screw depositor

A screw depositor comprises a hopper in which a screw is mounted. When the screw rotates it draws product from the hopper into a pipe. The hopper may be equipped with stirrers to move the product towards the screw and a product measuring chamber or product dispensing valve may be fitted to the discharge of the screw. The volume of product can be varied by increasing or decreasing the speed of the screw, by varying the volume of the measuring chamber or by controlling the actuation of the product dispensing valve. Screw depositors are typically used to deposit dough, pastes or creams. Figure 5 shows the typical cross section of a screw depositor.

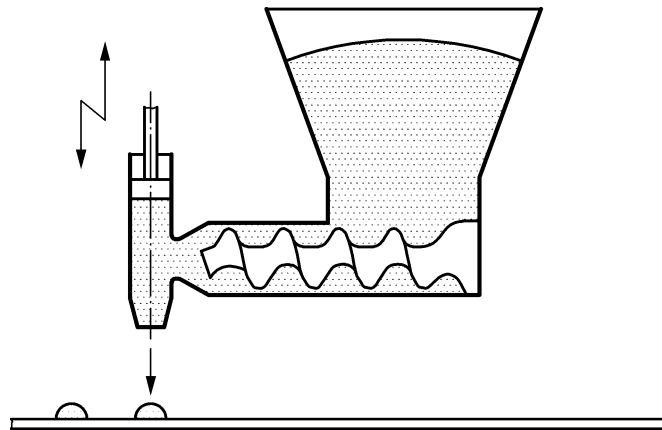


Figure 5 — Screw depositor

2 Normative references

The following documents, in whole or in part, are normatively referenced in this document and are indispensable for its application. For dated references, only the edition cited applies. For undated references, the latest edition of the referenced document (including any amendments) applies.

EN 349, *Safety of machinery — Minimum gaps to avoid crushing of parts of the human body*

EN 574:1996+A1:2008, *Safety of machinery — Two-hand control devices — Functional aspects — Principles for design*

EN 614 (all parts), *Safety of machinery — Ergonomic design principles*

EN 618, *Continuous handling equipment and systems — Safety and EMC requirements for equipment for mechanical handling of bulk materials except fixed belt conveyors*

EN 619, *Continuous handling equipment and systems — Safety and EMC requirements for equipment for mechanical handling of unit loads*

EN 620, *Continuous handling equipment and systems — Safety and EMC requirements for fixed belt conveyors for bulk materials*

EN 894-1, *Safety of machinery — Ergonomics requirements for the design of displays and control — Part 1: General principles for human interactions with displays and control actuators*

EN 894-2, *Safety of machinery — Ergonomics requirements for the design of displays and control — Part 2: Displays*

EN 15180:2014 (E)

EN 894-3, *Safety of machinery — Ergonomics requirements for the design of displays and control — Part 3: Control actuators*

EN 953, *Safety of machinery — Guards — General requirements for the design and construction of fixed and movable guards*

EN 1005-3, *Safety of machinery — Human physical performance — Part 3: Recommended force limits for machinery operation*

EN 1037, *Safety of machinery — Prevention of unexpected start-up*

EN 1672-2, *Food processing machinery — Basic concepts — Part 2: Hygiene requirements*

EN 60204-1:2006, *Safety of machinery — Electrical equipment of machines — Part 1: General requirements (IEC 60204-1:2005, modified)*

EN 60529, *Degrees of protection provided by enclosures (IP Code) (IEC 60529)*

EN 61310-1:2008, *Safety of machinery — Indication, marking and actuation — Part 1: Requirements for visual, acoustic and tactile signals (IEC 61310-1:2007)*

EN 61310-3, *Safety of machinery — Indication, marking and actuation — Part 3: Requirements for the location and operation of actuators (IEC 61310-3)*

EN 61496-1:2004, *Safety of machinery — Electro-sensitive protective equipment — Part 1: General requirements and tests (IEC 61496-1:2002, modified)*

EN ISO 3744, *Acoustics — Determination of sound power levels and sound energy levels of noise sources using sound pressure — Engineering methods for an essentially free field over a reflecting plane (ISO 3744)*

EN ISO 4413, *Hydraulic fluid power — General rules and safety requirements for systems and their components (ISO 4413)*

EN ISO 4414, *Pneumatic fluid power — General rules and safety requirements for systems and their components (ISO 4414)*

EN ISO 4871:2009, *Acoustics — Declaration and verification of noise emission values of machinery and equipment (ISO 4871:1996)*

EN ISO 11201:2010, *Acoustics — Noise emitted by machinery and equipment — Determination of emission sound pressure levels at a work station and at other specified positions in an essentially free field over a reflecting plane with negligible environmental corrections (ISO 11201:2010)*

EN ISO 11202:2010, *Acoustics — Noise emitted by machinery and equipment — Determination of emission sound pressure levels at a work station and at other specified positions applying approximate environmental corrections (ISO 11202:2010)*

EN ISO 11204, *Acoustics — Noise emitted by machinery and equipment — Determination of emission sound pressure levels at a work station and at other specified positions applying accurate environmental corrections (ISO 11204)*

EN ISO 12001:2009, *Acoustics — Noise emitted by machinery and equipment — Rules for the drafting and presentation of a noise test code (ISO 12001:1996)*

EN ISO 12100:2010, *Safety of machinery — General principles for design — Risk assessment and risk reduction (ISO 12100:2010)*

EN ISO 13732-1, *Ergonomics of the thermal environment — Methods for the assessment of human responses to contact with surfaces — Part 1: Hot surfaces (ISO 13732-1)*

EN ISO 13849-1:2008, *Safety of machinery — Safety-related parts of control systems — Part 1: General principles for design (ISO 13849-1:2006)*

EN ISO 13850, *Safety of machinery — Emergency stop — Principles for design (ISO 13850)*

EN ISO 13855, *Safety of machinery — Positioning of safeguards with respect to the approach speeds of parts of the human body (ISO 13855)*

EN ISO 13857:2008, *Safety of machinery — Safety distances to prevent hazard zones being reached by upper and lower limbs (ISO 13857:2008)*

EN ISO 14119:2013, *Safety of machinery — Interlocking devices associated with guards — Principles for design and selection (ISO 14119:2013)*

EN ISO 14122-1, *Safety of machinery — Permanent means of access to machinery — Part 1: Choice of fixed means of access between two levels (ISO 14122-1)*

EN ISO 14122-2, *Safety of machinery — Permanent means of access to machinery — Part 2: Working platforms and walkways (ISO 14122-2)*

EN ISO 14122-3, *Safety of machinery — Permanent means of access to machinery — Part 3: Stairs, stepladders and guard-rails (ISO 14122-3)*

koniec náhľadu – text ďalej pokračuje v platenej verzii STN