

STN	Vysokonapäťové spínacie a riadiace zariadenia. Časť 211: Priame pripojenie medzi výkonovými transformátormi a plynom izolovanými spínacími zariadeniami s kovovým krytom na menovité napätia nad 52 kV. Oprava AC	STN EN 62271-211/AC
		35 4220

Táto norma obsahuje anglickú verziu európskej normy.
This standard includes the English version of the European Standard.

Táto norma bola oznámená vo Vestníku ÚNMS SR č. 02/16

Text opravy je iba v dokumente IEC.

Obsahuje: EN 62271-211:2014/AC Aug.:2015, IEC 62271-211:2014/COR1:2015

122370

INTERNATIONAL ELECTROTECHNICAL COMMISSION
COMMISSION ÉLECTROTECHNIQUE INTERNATIONALE

IEC 62271-211
Edition 1.0 2014-04

IEC 62271-211
Édition 1.0 2014-04

**HIGH-VOLTAGE SWITCHGEAR AND
CONTROLGEAR –**

**Part 211: Direct connection between power
transformers and gas-insulated metal-enclosed
switchgear for rated voltages above 52 kV**

APPAREILLAGE À HAUTE TENSION –

**Partie 211: Raccordements directs entre
transformateurs de puissance et appareillage
sous enveloppe métallique à isolation gazeuse
de tensions assignées supérieures à 52 kV**

CORRIGENDUM 1

Corrections to the French version appear after the English text.

Les corrections à la version française sont données après le texte anglais.

Figure 1 – Typical direct connection between power transformer and gas-insulated metal-enclosed switchgear

Replace the existing Figure 1 with the following new figure:

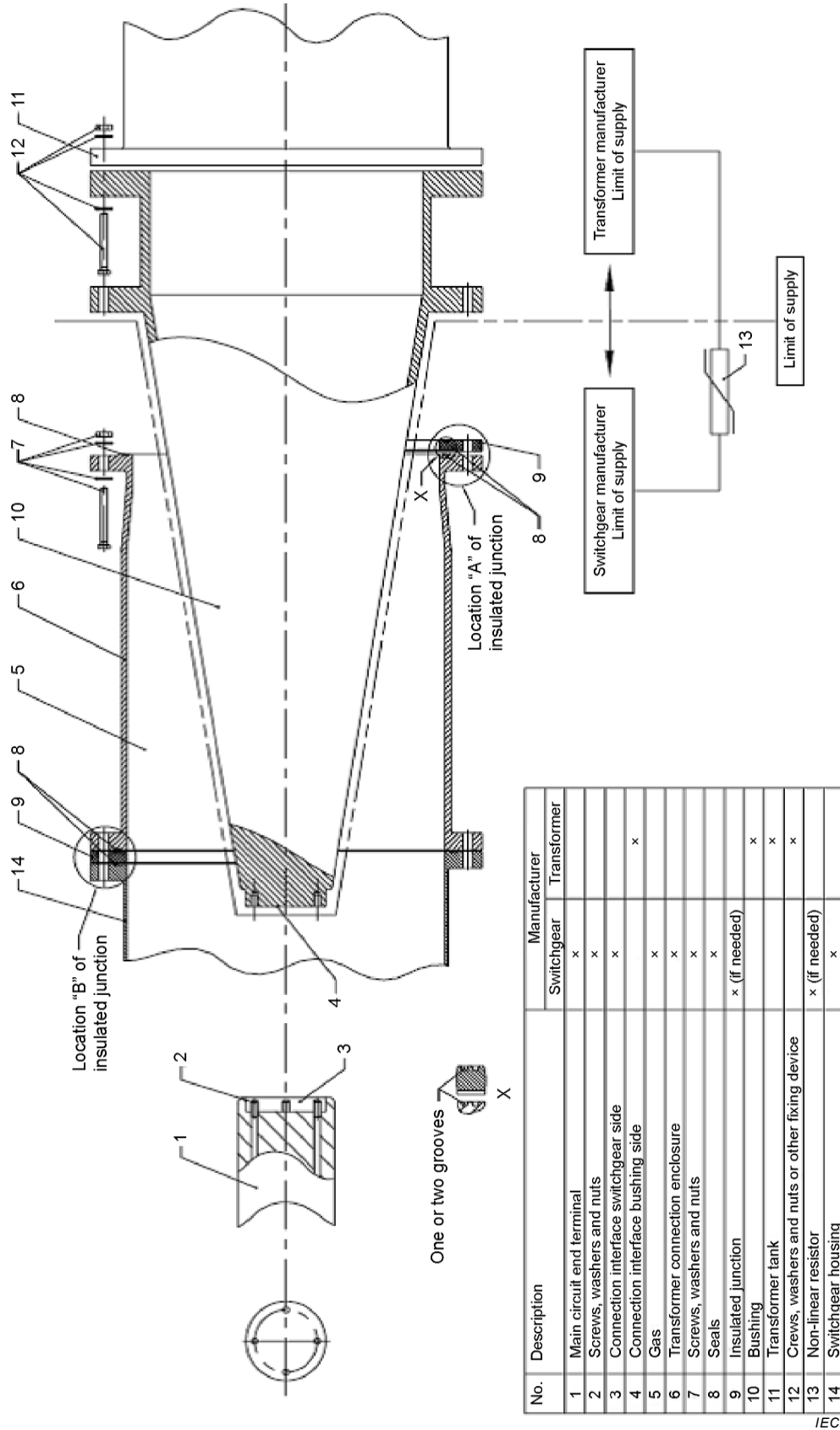


Figure 2 – Standard dimensions for typical direct connection between power transformer and gas-insulated metal-enclosed switchgear

Replace the existing Figure 2 with the following new figure:

