

STN	Dráhové aplikácie. Dráhové vozidlá. Kombinovaná skúšobná metóda na trakčné systémy.	STN EN 61377 36 2207
------------	--	--

Railway applications - Rolling stock - Combined test method for traction Systems

Táto norma obsahuje anglickú verziu európskej normy.
This standard includes the English version of the European Standard.

Táto norma bola oznámená vo Vestníku ÚNMS SR č. 09/16

Obsahuje: EN 61377:2016, IEC 61377:2016

Oznámením tejto normy sa od 23.02.2019 ruší
STN EN 61377-1 (36 2207) zo septembra 2006

STN EN 61377-2 (36 2207) z júla 2004

STN EN 61377-3 (36 2207) z júla 2004

123470

Úrad pre normalizáciu, metrológiu a skúšobníctvo SR, 2016
Podľa zákona č. 264/1999 Z. z. v znení neskorších predpisov sa môžu slovenské technické normy
rozmnožovať a rozširovať iba so súhlasom Úradu pre normalizáciu, metrológiu a skúšobníctvo SR.

EUROPEAN STANDARD

EN 61377

NORME EUROPÉENNE

EUROPÄISCHE NORM

April 2016

ICS 45.060

Supersedes EN 61377-1:2006, EN 61377-2:2002,
EN 61377-3:2002

English Version

**Railway applications - Rolling stock - Combined test method for
traction Systems
(IEC 61377:2016)**Applications ferroviaires - Matériel roulant - Méthode
d'essais combinés pour systèmes de traction
(IEC 61377:2016)Bahnanwendungen - Bahnfahrzeuge - Kombiniertes
Prüfverfahren für Traktionssysteme
(IEC 61377:2016)

This European Standard was approved by CENELEC on 2016-02-23. CENELEC members are bound to comply with the CEN/CENELEC Internal Regulations which stipulate the conditions for giving this European Standard the status of a national standard without any alteration.

Up-to-date lists and bibliographical references concerning such national standards may be obtained on application to the CEN-CENELEC Management Centre or to any CENELEC member.

This European Standard exists in three official versions (English, French, German). A version in any other language made by translation under the responsibility of a CENELEC member into its own language and notified to the CEN-CENELEC Management Centre has the same status as the official versions.

CENELEC members are the national electrotechnical committees of Austria, Belgium, Bulgaria, Croatia, Cyprus, the Czech Republic, Denmark, Estonia, Finland, Former Yugoslav Republic of Macedonia, France, Germany, Greece, Hungary, Iceland, Ireland, Italy, Latvia, Lithuania, Luxembourg, Malta, the Netherlands, Norway, Poland, Portugal, Romania, Slovakia, Slovenia, Spain, Sweden, Switzerland, Turkey and the United Kingdom.

European Committee for Electrotechnical Standardization
Comité Européen de Normalisation Electrotechnique
Europäisches Komitee für Elektrotechnische Normung**CEN-CENELEC Management Centre: Avenue Marnix 17, B-1000 Brussels**

EN 61377:2016**European foreword**

The text of document 9/2078/FDIS, future edition 2 of IEC 61377, prepared by IEC/TC 9 "Electrical equipment and systems for railways" was submitted to the IEC-CENELEC parallel vote and approved by CENELEC as EN 61377:2016.

The following dates are fixed:

- latest date by which the document has to be implemented at national level by publication of an identical national standard or by endorsement (dop) 2016-11-23
- latest date by which the national standards conflicting with the document have to be withdrawn (dow) 2019-02-23

This document supersedes EN 61377-1:2006, EN 61377-2:2002 and EN 61377-3:2002.

Attention is drawn to the possibility that some of the elements of this document may be the subject of patent rights. CENELEC [and/or CEN] shall not be held responsible for identifying any or all such patent rights.

Endorsement notice

The text of the International Standard IEC 61377:2016 was approved by CENELEC as a European Standard without any modification.

In the official version, for Bibliography, the following notes have to be added for the standards indicated:

IEC 60077-3	NOTE	Harmonized as EN 60077-3.
IEC 60077-4	NOTE	Harmonized as EN 60077-4.
IEC 60310	NOTE	Harmonized as EN 60310.
IEC 60322	NOTE	Harmonized as EN 60322.
ISO 14253-2	NOTE	Harmonized as EN ISO 14253-2.
ISO/IEC 17025	NOTE	Harmonized as EN ISO/IEC 17025.

Annex ZA (normative)

Normative references to international publications with their corresponding European publications

The following documents, in whole or in part, are normatively referenced in this document and are indispensable for its application. For dated references, only the edition cited applies. For undated references, the latest edition of the referenced document (including any amendments) applies.

NOTE 1 When an International Publication has been modified by common modifications, indicated by (mod), the relevant EN/HD applies.

NOTE 2 Up-to-date information on the latest versions of the European Standards listed in this annex is available here: www.cenelec.eu

<u>Publication</u>	<u>Year</u>	<u>Title</u>	<u>EN/HD</u>	<u>Year</u>
IEC 60050	Series	International Electrotechnical Vocabulary	-	-
IEC 60349-1	-	Electric traction - Rotating electrical machines for rail and road vehicles - Part 1: Machines other than electronic converter-fed alternating current motors	EN 60349-1	-
IEC 60349-2	-	Electric traction - Rotating electrical machines for rail and road vehicles - Part 2: Electronic converter-fed alternating current motors	EN 60349-2	-
IEC/TS 60349-3	-	Electric traction - Rotating electrical machines for rail and road vehicles - Part 3: Determination of the total losses of converter-fed alternating current motors by summation of the component losses	-	-
IEC 60349-4	-	Electric traction - Rotating electrical machines for rail and road vehicles - Part 4: Permanent magnet synchronous electrical machines connected to an electronic converter	EN 60349-4	-
IEC 60850	-	Railway applications - Supply voltages of traction systems	-	-
IEC 61133	-	Railway applications - Rolling stock - Testing of rolling stock on completion of construction and before entry into service	-	-
IEC 61287-1	-	Railway applications - Power converters installed on board rolling stock - Part 1: Characteristics and test methods	EN 61287-1	-
IEC 62313	-	Railway applications - Power supply and rolling stock - Technical criteria for the coordination between power supply (substation) and rolling stock	-	-



INTERNATIONAL STANDARD

NORME INTERNATIONALE

Railway applications – Rolling stock – Combined test method for traction systems

Applications ferroviaires – Matériel roulant – Méthode d'essais combinés pour systèmes de traction





THIS PUBLICATION IS COPYRIGHT PROTECTED

Copyright © 2016 IEC, Geneva, Switzerland

All rights reserved. Unless otherwise specified, no part of this publication may be reproduced or utilized in any form or by any means, electronic or mechanical, including photocopying and microfilm, without permission in writing from either IEC or IEC's member National Committee in the country of the requester. If you have any questions about IEC copyright or have an enquiry about obtaining additional rights to this publication, please contact the address below or your local IEC member National Committee for further information.

Droits de reproduction réservés. Sauf indication contraire, aucune partie de cette publication ne peut être reproduite ni utilisée sous quelque forme que ce soit et par aucun procédé, électronique ou mécanique, y compris la photocopie et les microfilms, sans l'accord écrit de l'IEC ou du Comité national de l'IEC du pays du demandeur. Si vous avez des questions sur le copyright de l'IEC ou si vous désirez obtenir des droits supplémentaires sur cette publication, utilisez les coordonnées ci-après ou contactez le Comité national de l'IEC de votre pays de résidence.

IEC Central Office
3, rue de Varembe
CH-1211 Geneva 20
Switzerland

Tel.: +41 22 919 02 11
Fax: +41 22 919 03 00
info@iec.ch
www.iec.ch

About the IEC

The International Electrotechnical Commission (IEC) is the leading global organization that prepares and publishes International Standards for all electrical, electronic and related technologies.

About IEC publications

The technical content of IEC publications is kept under constant review by the IEC. Please make sure that you have the latest edition, a corrigenda or an amendment might have been published.

IEC Catalogue - webstore.iec.ch/catalogue

The stand-alone application for consulting the entire bibliographical information on IEC International Standards, Technical Specifications, Technical Reports and other documents. Available for PC, Mac OS, Android Tablets and iPad.

IEC publications search - www.iec.ch/searchpub

The advanced search enables to find IEC publications by a variety of criteria (reference number, text, technical committee,...). It also gives information on projects, replaced and withdrawn publications.

IEC Just Published - webstore.iec.ch/justpublished

Stay up to date on all new IEC publications. Just Published details all new publications released. Available online and also once a month by email.

Electropedia - www.electropedia.org

The world's leading online dictionary of electronic and electrical terms containing 20 000 terms and definitions in English and French, with equivalent terms in 15 additional languages. Also known as the International Electrotechnical Vocabulary (IEV) online.

IEC Glossary - std.iec.ch/glossary

65 000 electrotechnical terminology entries in English and French extracted from the Terms and Definitions clause of IEC publications issued since 2002. Some entries have been collected from earlier publications of IEC TC 37, 77, 86 and CISPR.

IEC Customer Service Centre - webstore.iec.ch/csc

If you wish to give us your feedback on this publication or need further assistance, please contact the Customer Service Centre: csc@iec.ch.

A propos de l'IEC

La Commission Electrotechnique Internationale (IEC) est la première organisation mondiale qui élabore et publie des Normes internationales pour tout ce qui a trait à l'électricité, à l'électronique et aux technologies apparentées.

A propos des publications IEC

Le contenu technique des publications IEC est constamment revu. Veuillez vous assurer que vous possédez l'édition la plus récente, un corrigendum ou amendement peut avoir été publié.

Catalogue IEC - webstore.iec.ch/catalogue

Application autonome pour consulter tous les renseignements bibliographiques sur les Normes internationales, Spécifications techniques, Rapports techniques et autres documents de l'IEC. Disponible pour PC, Mac OS, tablettes Android et iPad.

Recherche de publications IEC - www.iec.ch/searchpub

La recherche avancée permet de trouver des publications IEC en utilisant différents critères (numéro de référence, texte, comité d'études,...). Elle donne aussi des informations sur les projets et les publications remplacées ou retirées.

IEC Just Published - webstore.iec.ch/justpublished

Restez informé sur les nouvelles publications IEC. Just Published détaille les nouvelles publications parues. Disponible en ligne et aussi une fois par mois par email.

Electropedia - www.electropedia.org

Le premier dictionnaire en ligne de termes électroniques et électriques. Il contient 20 000 termes et définitions en anglais et en français, ainsi que les termes équivalents dans 15 langues additionnelles. Egalement appelé Vocabulaire Electrotechnique International (IEV) en ligne.

Glossaire IEC - std.iec.ch/glossary

65 000 entrées terminologiques électrotechniques, en anglais et en français, extraites des articles Termes et Définitions des publications IEC parues depuis 2002. Plus certaines entrées antérieures extraites des publications des CE 37, 77, 86 et CISPR de l'IEC.

Service Clients - webstore.iec.ch/csc

Si vous désirez nous donner des commentaires sur cette publication ou si vous avez des questions contactez-nous: csc@iec.ch.



INTERNATIONAL STANDARD

NORME INTERNATIONALE

Railway applications – Rolling stock – Combined test method for traction systems

Applications ferroviaires – Matériel roulant – Méthode d'essais combinés pour systèmes de traction

INTERNATIONAL
ELECTROTECHNICAL
COMMISSION

COMMISSION
ELECTROTECHNIQUE
INTERNATIONALE

ICS 45.060

ISBN 978-2-8322-3101-2

**Warning! Make sure that you obtained this publication from an authorized distributor.
Attention! Veuillez vous assurer que vous avez obtenu cette publication via un distributeur agréé.**

CONTENTS

FOREWORD	6
1 Scope	8
2 Normative references	10
3 Terms and definitions	10
4 Traction system characteristics	12
5 General test requirements	13
6 General test conditions	14
6.1 Test setup	14
6.1.1 Setup of traction system under test	14
6.1.2 Test bench architecture	15
6.2 Cooling during the test	17
6.3 Mechanical output measurement	18
6.3.1 General	18
6.3.2 Summation of losses method	18
6.3.3 Comparison of power method	19
6.3.4 Comparison of current method	20
6.3.5 Back to back method	21
6.4 Tolerances and measuring accuracy	21
6.5 Environmental conditions	21
7 Torque characteristic test	22
7.1 General	22
7.2 Torque characteristics test at motor hot	22
7.2.1 Test objective	22
7.2.2 Test conditions	22
7.2.3 Test procedure	23
7.2.4 Acceptance criteria	23
7.3 Torque characteristics test at motor cold	23
7.3.1 Test objective	23
7.3.2 Test conditions	23
7.3.3 Test procedure	24
7.3.4 Acceptance criteria	24
7.4 Starting torque at zero speed	24
7.4.1 Test objective	24
7.4.2 Test conditions	24
7.4.3 Test procedure	24
7.4.4 Acceptance criteria	24
8 Efficiency and energy consumption test	24
8.1 General	24
8.2 Efficiency characteristics	25
8.2.1 Test objective	25
8.2.2 Test conditions	25
8.2.3 Test procedure	25
8.2.4 Acceptance criteria	25
8.3 Energy consumption on route profile	26
8.3.1 Test objective	26

8.3.2	Test conditions	26
8.3.3	Test procedure	26
8.3.4	Acceptance criteria	26
9	Temperature rise test	27
9.1	General.....	27
9.2	Temperature rise test at constant load	27
9.2.1	Test objective	27
9.2.2	Test conditions	27
9.2.3	Test procedure	27
9.2.4	Acceptance criteria	28
9.3	Temperature rise on route profile	28
9.3.1	Test objective	28
9.3.2	Test conditions	28
9.3.3	Test procedure	28
9.3.4	Acceptance criteria	28
9.4	Test with wheel diameter differences for paralleled asynchronous motors	29
9.4.1	General	29
9.4.2	Test objective	29
9.4.3	Test conditions	29
9.4.4	Test procedure	30
10	System function test	31
10.1	Start from backward/reverse motion.....	31
10.1.1	Test objective	31
10.1.2	Test conditions	31
10.1.3	Test procedure	31
10.1.4	Acceptance criteria	31
10.2	Motoring-braking transition.....	31
10.2.1	Test objective	31
10.2.2	Test conditions	31
10.2.3	Test procedure	32
10.2.4	Acceptance criteria	32
11	Variation of line voltage	32
11.1	Test objective	32
11.2	Test conditions	32
11.3	Test procedure.....	33
11.4	Acceptance criteria	34
12	System protection test	34
12.1	General.....	34
12.2	Rapid voltage changes test.....	34
12.2.1	Test objective	34
12.2.2	Test conditions	34
12.2.3	Test procedure	35
12.2.4	Acceptance criteria	36
12.3	Traction supply voltage interruption	36
12.3.1	Test objective	36
12.3.2	Test conditions	36
12.3.3	Test procedure	36
12.3.4	Acceptance criteria	36

12.4	Traction supply contact loss	36
12.4.1	Test objective	36
12.4.2	Test conditions	36
12.4.3	Test procedure	37
12.4.4	Acceptance criteria	37
12.5	Sudden loss of regeneration capability	37
12.5.1	Test objective	37
12.5.2	Test conditions	37
12.5.3	Test procedure	38
12.5.4	Acceptance criteria	38
12.6	Traction inverter stop	38
12.6.1	Test objective	38
12.6.2	Test conditions	38
12.6.3	Test procedure	38
12.6.4	Acceptance criteria	38
12.7	Temperature calculation functions	39
12.7.1	General	39
12.7.2	Test objective	39
12.7.3	Test conditions	39
12.7.4	Test procedure	39
12.7.5	Acceptance criteria	39
12.8	Over-current and over-voltage protection	39
12.9	Control battery supply interruption	39
12.9.1	Test objective	39
12.9.2	Test conditions	39
12.9.3	Test procedure	39
12.9.4	Acceptance criteria	40
13	Fault management test	40
13.1	General	40
13.2	Loss of sensor function	40
13.3	Loss of command and feedback signals	40
13.4	Fault in cooling systems	40
13.5	Earth and short-circuit faults	41
Annex A (normative)	List of combined tests	42
Annex B (informative)	List of clauses with agreements between the user and manufacturer	43
Annex C (normative)	Special test items and conditions for DC motors	44
C.1	General	44
C.2	Test bench architecture	44
C.2.1	Test setup	44
C.2.2	Load system	44
C.3	Commutation test	45
Bibliography	46
Figure 1	– Overview of traction system architecture	8
Figure 2	– Example of relationship between the “traction system under test” and the “traction system”	9
Figure 3	– Traction system – relationship between user, suppliers and manufacturer	11

Figure 4 – Example of peak temperatures on route profile	13
Figure 5 – Example of test bench architecture with speed controlled load system	15
Figure 6 – Example of test bench architecture with back to back method	16
Figure 7 – Examples of simulating auxiliary load and traction load power supply	17
Figure 8 – Example of measurement using summation of losses method	18
Figure 9 – Example of measurement using comparison of power method.....	20
Figure 10 – Example of measurement using comparison of current method	21
Figure 11 – Example of measurement using back to back method.....	21
Figure 12 – Torque characteristics of a traction system	23
Figure 13 – Effect of wheel diameter mismatch on the torque characteristic of asynchronous motor	29
Figure 14 – Test conditions for motoring-braking transition	32
Figure 15 – Test conditions in traction system range of voltage	33
Figure 16 – Test conditions for variation of the voltage	33
Figure 17 – Rapid voltage change with DC line voltage.....	35
Figure 18 – Rapid voltage change with AC line voltage.....	35
Figure 19 – Example of method to create a rapid voltage change	36
Figure 20 – Example of method to simulate the traction supply contact loss.....	37
Figure 21 – Example of method to create loss of regenerative capability.....	38
Figure C.1 – Example of braking configuration for a traction system under test with separately excited DC motor	44
Figure C.2 – Test bench arrangement for back to back test of the traction system under test with a DC motor	45
Table A.1 – List of combined tests	42
Table B.1 – List of subclauses including agreements between the user and manufacturer	43

INTERNATIONAL ELECTROTECHNICAL COMMISSION

RAILWAY APPLICATIONS – ROLLING STOCK – COMBINED TEST METHOD FOR TRACTION SYSTEMS

FOREWORD

- 1) The International Electrotechnical Commission (IEC) is a worldwide organization for standardization comprising all national electrotechnical committees (IEC National Committees). The object of IEC is to promote international co-operation on all questions concerning standardization in the electrical and electronic fields. To this end and in addition to other activities, IEC publishes International Standards, Technical Specifications, Technical Reports, Publicly Available Specifications (PAS) and Guides (hereafter referred to as "IEC Publication(s)"). Their preparation is entrusted to technical committees; any IEC National Committee interested in the subject dealt with may participate in this preparatory work. International, governmental and non-governmental organizations liaising with the IEC also participate in this preparation. IEC collaborates closely with the International Organization for Standardization (ISO) in accordance with conditions determined by agreement between the two organizations.
- 2) The formal decisions or agreements of IEC on technical matters express, as nearly as possible, an international consensus of opinion on the relevant subjects since each technical committee has representation from all interested IEC National Committees.
- 3) IEC Publications have the form of recommendations for international use and are accepted by IEC National Committees in that sense. While all reasonable efforts are made to ensure that the technical content of IEC Publications is accurate, IEC cannot be held responsible for the way in which they are used or for any misinterpretation by any end user.
- 4) In order to promote international uniformity, IEC National Committees undertake to apply IEC Publications transparently to the maximum extent possible in their national and regional publications. Any divergence between any IEC Publication and the corresponding national or regional publication shall be clearly indicated in the latter.
- 5) IEC itself does not provide any attestation of conformity. Independent certification bodies provide conformity assessment services and, in some areas, access to IEC marks of conformity. IEC is not responsible for any services carried out by independent certification bodies.
- 6) All users should ensure that they have the latest edition of this publication.
- 7) No liability shall attach to IEC or its directors, employees, servants or agents including individual experts and members of its technical committees and IEC National Committees for any personal injury, property damage or other damage of any nature whatsoever, whether direct or indirect, or for costs (including legal fees) and expenses arising out of the publication, use of, or reliance upon, this IEC Publication or any other IEC Publications.
- 8) Attention is drawn to the Normative references cited in this publication. Use of the referenced publications is indispensable for the correct application of this publication.
- 9) Attention is drawn to the possibility that some of the elements of this IEC Publication may be the subject of patent rights. IEC shall not be held responsible for identifying any or all such patent rights.

International Standard IEC 61377 has been prepared by IEC technical committee 9: Electrical equipment and systems for railways.

This edition cancels and replaces IEC 61377-1 (2006), IEC 61377-2 (2002) and IEC 61377-3 (2002). It constitutes a technical revision.

This edition includes the following main technical changes with regard to the previous editions: it includes updates as necessary in order to meet the current technical state of the art, to improve clarity and to create an edition that considers all types of motors part of a traction system.

The text of this standard is based on the following documents:

FDIS	Report on voting
9/2078/FDIS	9/2113/RVD

Full information on the voting for the approval of this standard can be found in the report on voting indicated in the above table.

This publication has been drafted in accordance with the ISO/IEC Directives, Part 2.

The committee has decided that the contents of this publication will remain unchanged until the stability date indicated on the IEC website under "<http://webstore.iec.ch>" in the data related to the specific publication. At this date, the publication will be

- reconfirmed,
- withdrawn,
- replaced by a revised edition, or
- amended.

RAILWAY APPLICATIONS – ROLLING STOCK – COMBINED TEST METHOD FOR TRACTION SYSTEMS

1 Scope

This International Standard applies to the traction system consisting (when it applies) of traction motor(s), converter(s), traction control equipment including software, transformer, input filters, brake resistors, main circuit-breaker, cooling equipment, transducers, contactors, etc.

Figure 1 is just an overview and is not representative of all traction system architectures.

Current collector, mechanical braking systems and gearbox are not in the scope of this standard.

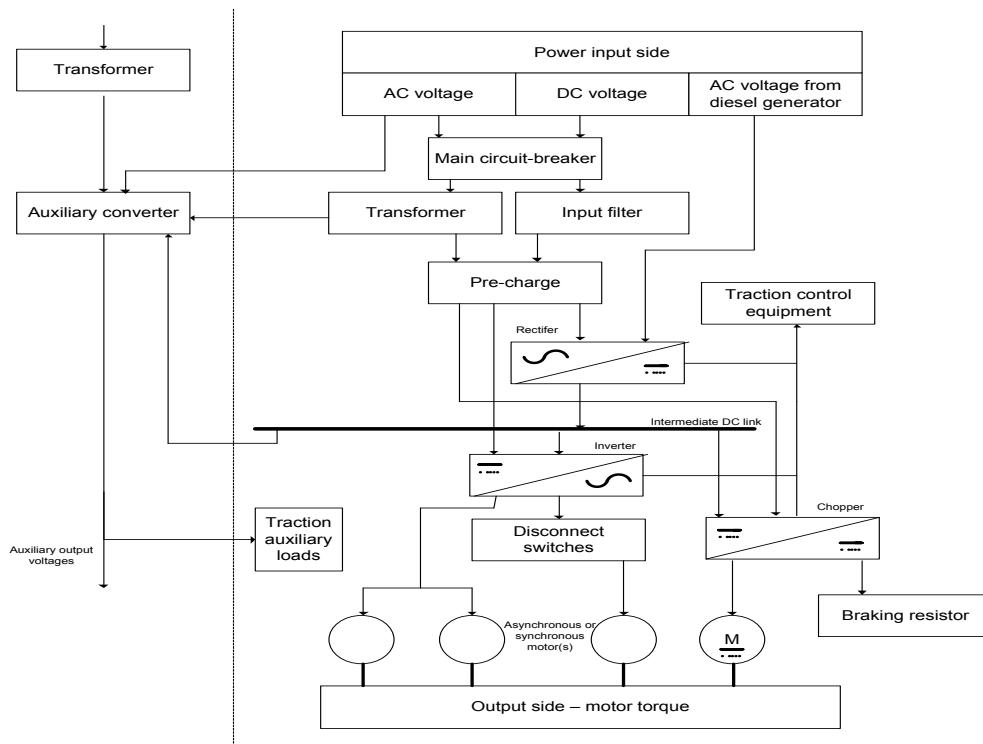
Types of motors applicable in this standard are asynchronous, or synchronous including permanent magnet (PMM), or direct current (DC).

The auxiliary converter(s) is (are) part of the scope when the auxiliary converter is enclosed within the traction converter. Otherwise, when the traction system feeds an auxiliary system outside the traction converter, the auxiliary system can be replaced by an equivalent load.

NOTE 1 Energy storage system is not considered in this standard since there is no specific type test standard for energy storage system.

NOTE 2 Auxiliary loads validation is not part of this standard.

NOTE 3 The gearbox can be part of test set-up, but it is not a part of traction system.



IEC

Figure 1 – Overview of traction system architecture

The objective of this standard is to specify the type test of a traction system, mainly comprising of:

- test of performance characteristics;
- test methods of verifying these performance characteristics.

This standard does not specify the type test of each individual component.

The traction system under test incorporates at least one complete traction conversion line (at least one traction converter and its related loads, one transformer in the case of AC supply or input filter in the case of DC supply). The representativeness of the traction system under test versus the actual traction system is agreed between the user and manufacturer.

Figure 2 gives one example of the relationship between the traction system under test and the whole traction system.

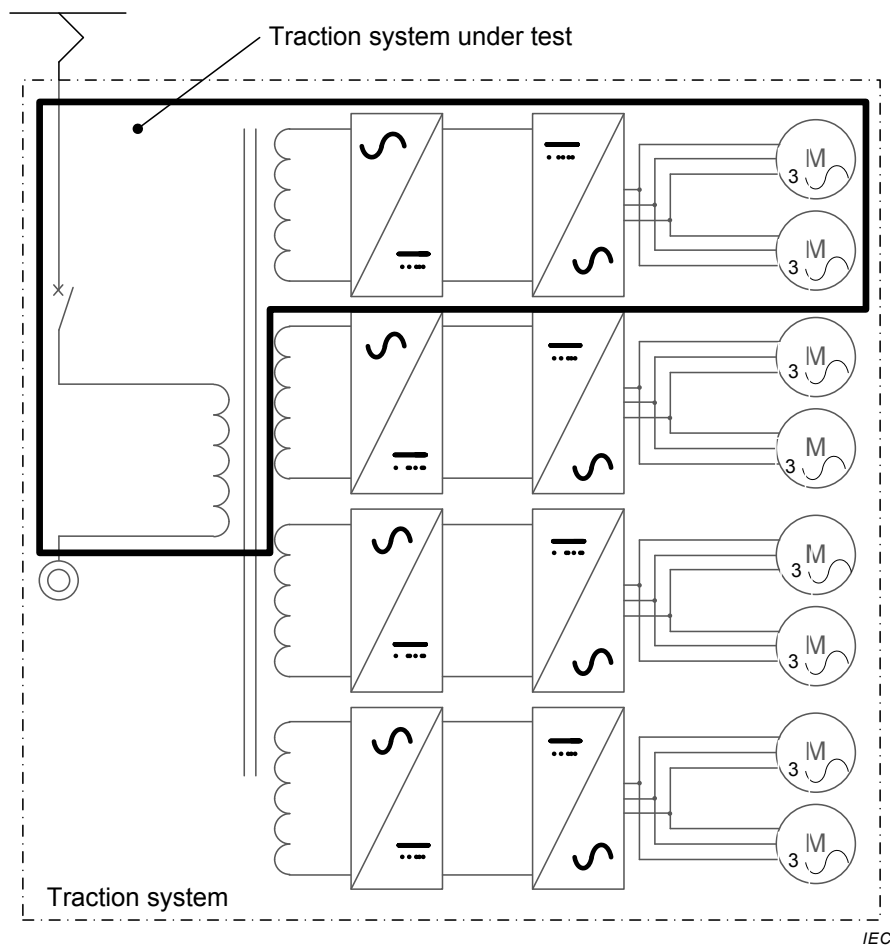


Figure 2 – Example of relationship between the “traction system under test” and the “traction system”

The traction system under test is equipped with components that are representative of the production series.

Deviations may be permitted by agreement between user and manufacturer, and are justified from an impact stand point in advance of the test. Using equivalent components or parts is permitted if no significant influence on the test result is expected.

2 Normative references

The following documents, in whole or in part, are normatively referenced in this document and are indispensable for its application. For dated references, only the edition cited applies. For undated references, the latest edition of the referenced document (including any amendments) applies.

IEC 60050 (all parts): *International Electrotechnical Vocabulary* (available at <http://www.electropedia.org>)

IEC 60349-1, *Electric traction – Rotating electrical machines for rail and road vehicles – Part 1: Machines other than electronic converter-fed alternating current motors*

IEC 60349-2, *Electric traction – Rotating electrical machines for rail and road vehicles – Part 2: Electronic converter-fed alternating current motors*

IEC TS 60349-3, *Electric traction – Rotating electrical machines for rail and road vehicles – Part 3: Determination of the total losses of converter-fed alternating current motors by summation of the component losses*

IEC 60349-4, *Electric traction – Rotating electrical machines for rail and road vehicles – Part 4: Permanent magnet synchronous electrical machines connected to an electronic converter*

IEC 60850, *Railway applications – Supply voltages of traction systems*

IEC 61133, *Railway applications – Rolling stock – Testing of rolling stock on completion of construction and before entry into service*

IEC 61287-1, *Railway applications – Power converters installed on board rolling stock – Part 1: Characteristics and test methods*

IEC 62313, *Railway applications – Power supply and rolling stock – Technical criteria for the coordination between power supply (substation) and rolling*

koniec náhľadu – text ďalej pokračuje v platenej verzii STN