

STN	Hliník a zliatiny hliníka. Tyče a rúry ťahané za studena. Časť 8: Trňom pretláčané rúry, tolerancie rozmerov a tvaru.	STN EN 754-8 42 7512
------------	--	--

Aluminium and aluminium alloys - Cold drawn rod/bar and tube - Part 8: Porthole tubes, tolerances on dimensions and form

Táto norma obsahuje anglickú verziu európskej normy.
This standard includes the English version of the European Standard.

Táto norma bola oznámená vo Vestníku ÚNMS SR č. 11/16

Obsahuje: EN 754-8:2016

Oznámením tejto normy sa ruší
STN EN 754-8 (42 7512) z augusta 2008

123779

EUROPEAN STANDARD

EN 754-8

NORME EUROPÉENNE

EUROPÄISCHE NORM

June 2016

ICS 77.150.10

Supersedes EN 754-8:2008

English Version

Aluminium and aluminium alloys - Cold drawn rod/bar and tube - Part 8: Porthole tubes, tolerances on dimensions and form

Aluminium et alliages d'aluminium - Barres et tubes
étirés - Partie 8 : Tubes filés à pont, tolérances sur
dimensions et forme

Aluminium und Aluminiumlegierungen - Gezogene
Stangen und Rohre - Teil 8: Mit Kammerwerkzeug
Stranggepresste Rohre, Grenzabmaße und
Formtoleranzen

This European Standard was approved by CEN on 11 April 2016.

CEN members are bound to comply with the CEN/CENELEC Internal Regulations which stipulate the conditions for giving this European Standard the status of a national standard without any alteration. Up-to-date lists and bibliographical references concerning such national standards may be obtained on application to the CEN-CENELEC Management Centre or to any CEN member.

This European Standard exists in three official versions (English, French, German). A version in any other language made by translation under the responsibility of a CEN member into its own language and notified to the CEN-CENELEC Management Centre has the same status as the official versions.

CEN members are the national standards bodies of Austria, Belgium, Bulgaria, Croatia, Cyprus, Czech Republic, Denmark, Estonia, Finland, Former Yugoslav Republic of Macedonia, France, Germany, Greece, Hungary, Iceland, Ireland, Italy, Latvia, Lithuania, Luxembourg, Malta, Netherlands, Norway, Poland, Portugal, Romania, Slovakia, Slovenia, Spain, Sweden, Switzerland, Turkey and United Kingdom.



EUROPEAN COMMITTEE FOR STANDARDIZATION
COMITÉ EUROPÉEN DE NORMALISATION
EUROPÄISCHES KOMITEE FÜR NORMUNG

CEN-CENELEC Management Centre: Avenue Marnix 17, B-1000 Brussels

Contents	Page
European foreword.....	3
1 Scope	4
2 Normative references	5
3 Tolerances on dimensions	5
3.1 General.....	5
3.2 Diameter - Round tube.....	5
3.3 Width, depth or width across flats - squares, rectangles, hexagons, octagons.....	6
3.4 Wall thickness variation (eccentricity).....	7
3.5 Length.....	8
3.6 Squareness of cut ends.....	9
4 Tolerances on form	9
4.1 General.....	9
4.2 Straightness.....	9
4.3 Convexity-Concavity.....	10
4.4 Twist.....	11
4.5 Angularity.....	12
4.6 Corner and fillet radii.....	13
4.7 Depth of dents for round tubes.....	13
Annex A (informative) Wall thickness variation (eccentricity)	15
A.1 General.....	15
A.2 Specifying round tube sizes and tolerances.....	15
Bibliography	17

European foreword

This document (EN 754-8:2016) has been prepared by Technical Committee CEN/TC 132 “Aluminium and aluminium alloys”, the secretariat of which is held by AFNOR.

This European Standard shall be given the status of a national standard, either by publication of an identical text or by endorsement, at the latest by December 2016, and conflicting national standards shall be withdrawn at the latest by December 2016.

Attention is drawn to the possibility that some of the elements of this document may be the subject of patent rights. CEN [and/or CENELEC] shall not be held responsible for identifying any or all such patent rights.

This document supersedes EN 754-8:2008.

The following technical modifications have been introduced during the revision:

- Subclause 3.2 Diameter - Round tube.

EN 754 comprises the following parts under the general title *Aluminium and aluminium alloys — Cold drawn rod/bar and tube*:

- *Part 1: Technical conditions for inspection and delivery;*
- *Part 2: Mechanical properties;*
- *Part 3: Round bars, tolerances on dimensions and form;*
- *Part 4: Square bars, tolerances on dimensions and form;*
- *Part 5: Rectangular bars, tolerances on dimensions and form;*
- *Part 6: Hexagonal bars, tolerances on dimensions and form;*
- *Part 7: Seamless tubes, tolerances on dimensions and form;*
- *Part 8: Porthole tubes, tolerances on dimensions and form.*

According to the CEN/CENELEC Internal Regulations, the national standards organizations of the following countries are bound to implement this European Standard: Austria, Belgium, Bulgaria, Croatia, Cyprus, Czech Republic, Denmark, Estonia, Finland, Former Yugoslav Republic of Macedonia, France, Germany, Greece, Hungary, Iceland, Ireland, Italy, Latvia, Lithuania, Luxembourg, Malta, Netherlands, Norway, Poland, Portugal, Romania, Slovakia, Slovenia, Spain, Sweden, Switzerland, Turkey and the United Kingdom.

1 Scope

This European Standard specifies the tolerances on dimensions and form for aluminium and aluminium alloy cold drawn porthole tubes with an outside diameter (*OD*) from 3 mm to 350 mm (round tube, see Figure 1) or with a cross section contained within a circumscribing circle (*CD*) from 8 mm to 300 mm (other than round tube, see Figure 2), supplied in straight lengths.

This document only applies to cold drawn tube for general engineering applications made in the following alloys:

- EN AW-1050A, EN AW-1200;
- EN AW-3003, EN AW-3103;
- EN AW-5005, EN AW-5005A, EN AW-5049, EN AW-5251, EN AW-5052;
- EN AW-6012, EN AW-6060, EN AW-6061, EN AW-6262, EN AW-6262A;
- EN AW-6063, EN AW-6063A, EN AW-6065, EN AW-6082;
- EN AW-7020.

The temper designations used in this part are according to EN 515.

This document only applies to tube produced by the porthole/bridge method of extrusion only (and then cold drawn to the final dimensions).

This document does not apply to:

- cold drawn tubes produced by the seamless, die/mandrel method (EN 754-7),
- tubes delivered in coils (EN 13958),
- coiled tubes cut to length (EN 13958).

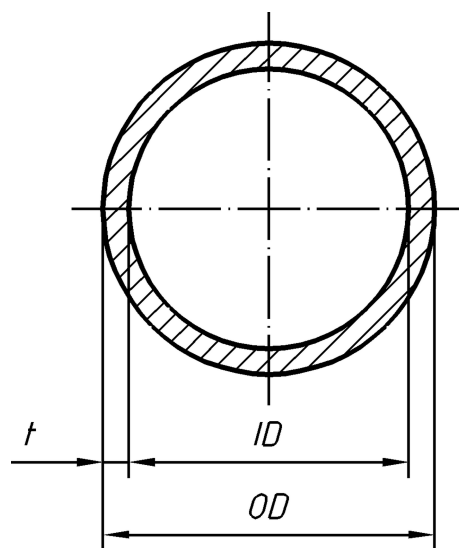


Figure 1 — Round tube

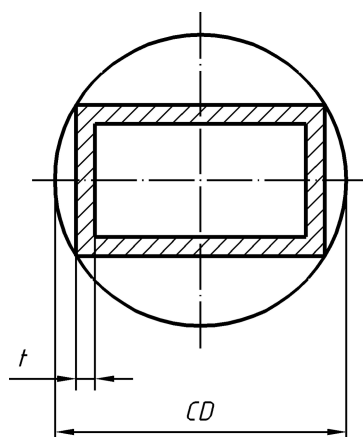


Figure 2 — Circumscribing circle for other than round tube

2 Normative references

The following documents, in whole or in part, are normatively referenced in this document and are indispensable for its application. For dated references, only the edition cited applies. For undated references, the latest edition of the referenced document (including any amendments) applies.

EN 754-1:2016, *Aluminium and aluminium alloys — Cold drawn rod/bar and tube — Part 1: Technical conditions for inspection and delivery*

koniec náhľadu – text ďalej pokračuje v platenej verzii STN