

TNI	Energetická hospodárnosť budov Výpočet potreby tepla na vykurovanie a chladenie, vnútorné teploty a citeľná a latentná tepelná záťaž Časť 2: Vysvetlenie a zdôvodnenie ISO 52016-1 a ISO 52017-1 (ISO/TR 52016-2: 2017)	TNI CEN ISO/TR 52016-2 73 0704
------------	--	--

Energy performance of buildings - Energy needs for heating and cooling, internal temperatures and sensible and latent heat loads - Part 2: Explanation and justification of ISO 52016-1 and ISO 52017-1 (ISO/TR 52016-2:2017)

Táto technická normalizačná informácia obsahuje anglickú verziu CEN ISO/TR 52016-2:2017, ISO/TR 52016-2:2017.
This Technical standard information includes the English version of CEN ISO/TR 52016-2:2017, ISO/TR 52016-2:2017.

Táto technická normalizačná informácia bola oznámená vo Vestníku ÚNMS SR č. 01/18

126027

Úrad pre normalizáciu, metrológiu a skúšobníctvo Slovenskej republiky, 2018
Podľa zákona č. 264/1999 Z. z. o technických požiadavkách na výrobky a o posudzovaní zhody a o zmene a doplnení niektorých zákonov v znení neskorších predpisov sa slovenská technická norma a časti slovenskej technickej normy môžu rozmnožovať alebo rozširovať len so súhlasom slovenského národného normalizačného orgánu.

TECHNICAL REPORT

CEN ISO/TR 52016-2

RAPPORT TECHNIQUE

TECHNISCHER BERICHT

July 2017

ICS 91.120.10

English Version

Energy performance of buildings - Energy needs for heating and cooling, internal temperatures and sensible and latent heat loads - Part 2: Explanation and justification of ISO 52016-1 and ISO 52017-1 (ISO/TR 52016-2:2017)

Performance énergétiques des bâtiments - Besoins d'énergie pour le chauffage et le refroidissement, les températures intérieures et les chaleurs sensible et latentes - Partie 2: Explication et justification de l'ISO 52016-1 et ISO 52017-1 (ISO/TR 52016-2:2017)

This Technical Report was approved by CEN on 24 February 2017. It has been drawn up by the Technical Committee CEN/TC 89.

CEN members are the national standards bodies of Austria, Belgium, Bulgaria, Croatia, Cyprus, Czech Republic, Denmark, Estonia, Finland, Former Yugoslav Republic of Macedonia, France, Germany, Greece, Hungary, Iceland, Ireland, Italy, Latvia, Lithuania, Luxembourg, Malta, Netherlands, Norway, Poland, Portugal, Romania, Serbia, Slovakia, Slovenia, Spain, Sweden, Switzerland, Turkey and United Kingdom.



EUROPEAN COMMITTEE FOR STANDARDIZATION
COMITÉ EUROPÉEN DE NORMALISATION
EUROPÄISCHES KOMITEE FÜR NORMUNG

CEN-CENELEC Management Centre: Avenue Marnix 17, B-1000 Brussels

Contents	Page
European foreword.....	3

European foreword

This document (CEN ISO/TR 52016-2:2017) has been prepared by Technical Committee ISO/TC 163 "Thermal performance and energy use in the built environment" in collaboration with Technical Committee CEN/TC 89 "Thermal performance of buildings and building components" the secretariat of which is held by SIS.

Attention is drawn to the possibility that some of the elements of this document may be the subject of patent rights. CEN shall not be held responsible for identifying any or all such patent rights.

This document has been prepared under a mandate given to CEN by the European Commission and the European Free Trade Association.

This document is part of the set of standards and accompanying technical reports on the energy performance of buildings and has been prepared under a mandate given to CEN by the European Commission and the European Free Trade Association (Mandate M/480, see reference [EF3] below).

Directive 2010/31/EU recasting the Directive 2002/91/EC on energy performance of buildings (EPBD, [EF4]) promotes the improvement of the energy performance of buildings within the European Union, taking into account all types of energy uses (heating, lighting, cooling, air conditioning, ventilation) and outdoor climatic and local conditions, as well as indoor climate requirements and cost effectiveness (Article 1).

The directive requires Member States to adopt measures and tools to achieve the prudent and rational use of energy resources. In order to achieve those goals, the EPBD requires increasing energy efficiency and the enhanced use of renewable energies in both new and existing buildings. One tool for this is the application by Member States of minimum requirements on the energy performance of new buildings and for existing buildings that are subject to major renovation, as well as for minimum performance requirements for the building envelope if energy-relevant parts are replaced or retrofitted. Other tools are energy certification of buildings, inspection of boilers and air-conditioning systems.

The use of European standards increases the accessibility, transparency and objectivity of the energy performance assessment in the Member States facilitating the comparison of best practices and supporting the internal market for construction products. The use of EPB-standards for calculating energy performance, as well as for energy performance certification and the inspection of heating systems and boilers, ventilation and air-conditioning systems will reduce costs compared to developing different standards at national level.

The first mandate to CEN to develop a set of CEN EPBD standards (M/343, [EF1]), to support the first edition of the EPBD ([EF2]) resulted in the successful publication of all EPBD related CEN standards in 2007-2008.

The mandate M/480 was issued to review the mandate M/343 as the recast of the EPBD raised the need to revisit the standards and reformulate and add standards so that they become on the one hand unambiguous and compatible, and on the other hand a clear and explicit overview of the choices, boundary conditions and input data that need to be defined at national or regional level. Such national or regional choices remain necessary, due to differences in climate, culture & building tradition, policy and legal frameworks. Consequently, the set of CEN-EPBD standards published in 2007-2008 had to be improved and expanded on the basis of the recast of the EPBD.

The EPB standards are flexible enough to allow for necessary national and regional differentiation and facilitate Member States implementation and the setting of requirements by the Member States.

Further target groups are users of the voluntary common European Union certification scheme for the energy performance of non-residential buildings (EPBD art.11.9) and any other regional (e.g. Pan European) parties wanting to motivate their assumptions by classifying the building energy performance for a dedicated building stock.

References:

[EF1] EPBD, Directive 2002/91/EC of the European Parliament and of the Council of 16 December 2002 on the energy performance of buildings

[EF2] Mandate M/343 Mandate to CEN, CENELEC and ETSI for the elaboration and adoption of standards for a methodology calculating the integrated energy performance of buildings and estimating the environmental impact, in accordance with the terms set forth in Directive 2002/91/EC; 30 January 2004

[EF3] Mandate M/480, Mandate to CEN, CENELEC and ETSI for the elaboration and adoption of standards for a methodology calculating the integrated energy performance of buildings and promoting the energy efficiency of buildings, in accordance with the terms set in the recast of the Directive on the energy performance of buildings (2010/31/EU) of 14th December 2010

[EF4] EPBD, Recast of the Directive on the energy performance of buildings (2010/31/EU) of 14th December 2010

Endorsement notice

The text of ISO/TR 52016-2:2017 has been approved by CEN as CEN ISO/TR 52016-2:2017 without any modification.

**Energy performance of buildings —
Energy needs for heating and cooling,
internal temperatures and sensible
and latent heat loads —**

Part 2:
**Explanation and justification of ISO
52016-1 and ISO 52017-1**

*Performance énergétiques des bâtiments — Besoins d'énergie pour
le chauffage et le refroidissement, les températures intérieures et les
chaleurs sensible et latentes —*

Partie 2: Explication et justification pour ISO 52016-1 et ISO 52017-1





COPYRIGHT PROTECTED DOCUMENT

© ISO 2017, Published in Switzerland

All rights reserved. Unless otherwise specified, no part of this publication may be reproduced or utilized otherwise in any form or by any means, electronic or mechanical, including photocopying, or posting on the internet or an intranet, without prior written permission. Permission can be requested from either ISO at the address below or ISO's member body in the country of the requester.

ISO copyright office
Ch. de Blandonnet 8 • CP 401
CH-1214 Vernier, Geneva, Switzerland
Tel. +41 22 749 01 11
Fax +41 22 749 09 47
copyright@iso.org
www.iso.org

Contents

Page

Foreword	vi
Introduction	vii
1 Scope	1
2 Normative references	1
3 Terms and definitions	1
4 Symbols, subscripts and abbreviations	2
4.1 Symbols.....	2
4.2 Subscripts.....	2
4.3 Abbreviations.....	3
5 Brief description of the method(s) and routing	3
5.1 Output of the method.....	3
5.1.1 Reference hourly method in ISO 52017-1.....	3
5.1.2 Hourly method in ISO 52016-1.....	3
5.1.3 Monthly method in ISO 52016-1.....	3
5.1.4 Overall and partial energy performance.....	4
5.2 General description of the methods in ISO 52016-1 and ISO 52017-1.....	4
5.2.1 Hourly calculation procedures in ISO 52016-1 and ISO 52017-1.....	4
5.2.2 The hourly method in ISO 52017-1.....	4
5.2.3 The hourly method in ISO 52016-1.....	5
5.2.4 Monthly calculation procedures in ISO 52016-1.....	7
5.2.5 Other differences between ISO 52016-1 and ISO 13790:2008 which it supersedes.....	7
5.2.6 Input data and assumptions for hourly and monthly method in ISO 52016-1.....	8
5.2.7 Choices between methods in ISO 52016-1.....	8
6 Calculation method in ISO 52016-1	8
6.1 Output data.....	8
6.1.1 General data on the assessed object and application.....	8
6.1.2 Calculated data.....	9
6.2 Calculation time intervals and calculation period.....	9
6.3 Input data.....	9
6.3.1 Source of data - General.....	9
6.3.2 Deviating subscripts.....	9
6.3.3 General data on the assessed object and application.....	9
6.3.4 Geometrical characteristics.....	10
6.3.5 Thermophysical parameters of the building and building elements.....	10
6.3.6 Loops between input and output variables.....	11
6.3.7 Operating and boundary conditions.....	11
6.3.8 Constants and physical data.....	12
6.3.9 Input data from Annex A (Annex B)	12
6.4 Zoning of the assessed object.....	12
6.4.1 General.....	12
6.4.2 Thermal zoning procedures.....	12
6.4.3 Size of the thermal zones.....	13
6.4.4 Heat exchange between thermal zones and service areas.....	13
6.4.5 Adjacent thermally unconditioned zones.....	14
6.4.6 Residential buildings or building units, adjustment for spatial average temperature.....	15
6.4.7 Thermally coupled or uncoupled zones.....	18
6.5 Hourly calculation procedures.....	19
6.5.1 Principle.....	19
6.5.2 Applicable time interval and calculation period.....	19
6.5.3 Assumptions and specific conditions.....	19

6.5.4	Calculation procedure	19
6.5.5	Calculation of (sensible) heating and cooling loads and temperatures	20
6.5.6	Overall energy balance of a thermal zone	21
6.5.7	Type of construction dependent properties of the nodes	25
6.5.8	Thermal transmission properties	25
6.5.9	Temperature of adjacent thermally unconditioned zone	28
6.5.10	Ventilation heat transfer coefficient, supply temperature and moisture content	28
6.5.11	Thermal capacity of the internal environment of the thermal zone	29
6.5.12	Internal heat gains	29
6.5.13	Solar gains	29
6.5.14	Moisture content and latent heat load	29
6.5.15	Calculation of key monthly data from hourly output	30
6.6	Monthly calculation procedures	30
6.6.1	Principle	30
6.6.2	Applicable time interval and calculation period	30
6.6.3	Assumptions	31
6.6.4	Energy need for space heating and cooling	31
6.6.5	Heat transfer by transmission	32
6.6.6	Heat transfer by ventilation	35
6.6.7	Internal heat gains	35
6.6.8	Solar heat gains	35
6.6.9	Internal effective heat capacity of a zone	35
6.6.10	Utilization factors	36
6.6.11	Calculation temperature and intermittency modes	37
6.6.12	Corrections for intermittency	38
6.6.13	Overheating indicator	46
6.6.14	Length of the heating and cooling season for operation of season-length-dependent provisions	47
6.6.15	Humidification and dehumidification	47
7	Quality control in ISO 52016-1	48
7.1	Calculation report	48
7.2	Hourly method: verification cases	48
7.2.1	Choice for BESTEST cases	48
7.2.2	Description of the verification test cases	49
7.2.3	Results of the verification test cases	49
7.2.4	Comparison with available BESTEST results of other programs	49
7.2.5	Limited scope	49
7.2.6	Specific deviations allowed	49
7.2.7	Availability of the data file with hourly values	50
7.2.8	More details on description of the verification test cases	50
7.2.9	Results of comparison with "reference" programs	50
7.2.10	Peak hourly loads	51
7.3	Hourly method: validation in case of specific alternative calculation procedures	52
7.4	Specific validation cases	52
7.4.1	Heat transfer through ground floor	52
7.4.2	Solar shading	52
8	Compliance check in ISO 52016-1	52
9	Worked out examples on ISO 52016-1	53
9.1	Example 1	53
9.1.1	Description	53
9.1.2	Description of construction elements of envelope	53
9.1.3	Calculation details	59
9.1.4	Remarks and comments	59
9.2	Example 2	59
9.2.1	Description	59
9.2.2	Description of construction elements of envelope	60
9.2.3	Other data	62

9.2.4	Calculation details	62
9.2.5	Remarks and comments	62
10	Validation of the calculation procedures	62
Annex A	(informative) ISO 52016-1: Input and method selection data sheet — Template	63
Annex B	(informative) ISO 52016-1: Input and method selection data sheet — Default choices	64
Annex C	(informative) ISO 52016-1: Regional references in line with ISO Global relevance policy	67
Annex D	(informative) ISO 52016-1: Multi-zone calculation with thermal coupling between zones	68
Annex E	(informative) ISO 52016-1: Heat transfer and solar heat gains of windows and special elements	69
Annex F	(informative) ISO 52016-1: Calculation of solar shading reduction factors	78
Annex G	(informative) ISO 52016-1: Dynamic transparent building elements	89
Annex H	(informative) Rationale behind reorganization of suite of standards	90
Annex I	(informative) Discussion on the hourly versus the monthly calculation methods in ISO 52016-1	95
Annex J	(informative) Accuracy of the methods in ISO 52016-1	104
Annex K	(informative) Explanation and derivation of monthly utilization factors	110
Annex L	(informative) Calculation examples	120
	Bibliography	126

Foreword

ISO (the International Organization for Standardization) is a worldwide federation of national standards bodies (ISO member bodies). The work of preparing International Standards is normally carried out through ISO technical committees. Each member body interested in a subject for which a technical committee has been established has the right to be represented on that committee. International organizations, governmental and non-governmental, in liaison with ISO, also take part in the work. ISO collaborates closely with the International Electrotechnical Commission (IEC) on all matters of electrotechnical standardization.

The procedures used to develop this document and those intended for its further maintenance are described in the ISO/IEC Directives, Part 1. In particular the different approval criteria needed for the different types of ISO documents should be noted. This document was drafted in accordance with the editorial rules of the ISO/IEC Directives, Part 2 (see www.iso.org/directives).

Attention is drawn to the possibility that some of the elements of this document may be the subject of patent rights. ISO shall not be held responsible for identifying any or all such patent rights. Details of any patent rights identified during the development of the document will be in the Introduction and/or on the ISO list of patent declarations received (see www.iso.org/patents).

Any trade name used in this document is information given for the convenience of users and does not constitute an endorsement.

For an explanation on the voluntary nature of standards, the meaning of ISO specific terms and expressions related to conformity assessment, as well as information about ISO's adherence to the World Trade Organization (WTO) principles in the Technical Barriers to Trade (TBT) see the following URL www.iso.org/iso/foreword.html.

This document was prepared by Technical Committee ISO/TC 163, *Thermal performance and energy use in the built environment*, Subcommittee SC 2, *Calculation methods*, in cooperation with the European Committee for Standardization (CEN) Technical Committee CEN/TC 89 *Thermal performance of buildings and building components*, in accordance with the Agreement on technical cooperation between ISO and CEN (Vienna Agreement).

A list of all parts in the ISO 52016 series can be found on the ISO website.

Introduction

The set of EPB standards, Technical Reports and supporting tools

In order to facilitate the necessary overall consistency and coherence, in terminology, approach, input/output relations and formats, for the whole set of EPB-standards, the following documents and tools are available:

- a) a document with basic principles to be followed in drafting EPB-standards: CEN/TS 16628:2014, *Energy Performance of Buildings — Basic Principles for the set of EPB standards* [1];
- b) a document with detailed technical rules to be followed in drafting EPB-standards; CEN/TS 16629:2014, *Energy Performance of Buildings — Detailed Technical Rules for the set of EPB-standards* [2].

The detailed technical rules are the basis for the following tools:

- 1) a common template for each EPB-standard, including specific drafting instructions for the relevant clauses;
- 2) a common template for each technical report that accompanies an EPB standard or a cluster of EPB standards, including specific drafting instructions for the relevant clauses;
- 3) a common template for the spreadsheet that accompanies each EPB standard, to demonstrate the correctness of the EPB calculation procedures.

Each EPB-standard follows the basic principles and the detailed technical rules and relates to the overarching EPB-standard, ISO 52000-1 [3].

One of the main purposes of the revision of the EPB-standards is to enable that laws and regulations directly refer to the EPB-standards and make compliance with them compulsory. This requires that the set of EPB-standards consists of a systematic, clear, comprehensive and unambiguous set of energy performance procedures. The number of options provided is kept as low as possible, taking into account national and regional differences in climate, culture and building tradition, policy and legal frameworks (subsidiarity principle). For each option, an informative default option is provided ([Annex B](#)).

Rationale behind the EPB Technical Reports

There is a risk that the purpose and limitations of the EPB standards will be misunderstood, unless the background and context to their contents – and the thinking behind them – is explained in some detail to readers of the standards. Consequently, various types of informative contents are recorded and made available for users to properly understand, apply and nationally or regionally implement the EPB standards.

If this explanation would have been attempted in the standards themselves, the result is likely to be confusing and cumbersome, especially if the standards are implemented or referenced in national or regional building codes.

Therefore each EPB standard is accompanied by an informative Technical Report, like this one, where all informative content is collected, to ensure a clear separation between normative and informative contents (see CEN/TS 16629 [2]):

- to avoid flooding and confusing the actual normative part with informative content;
- to reduce the page count of the actual standard; and
- to facilitate understanding of the set of EPB standards.

This was also one of the main recommendations from the European CENSE project [34] that laid the foundation for the preparation of the set of EPB standards.

This document

This document accompanies ISO 52016-1 and ISO 52017-1, which form part of a set of standards related to the evaluation of the energy performance of buildings (EPB).

The role and the positioning of the accompanying standards in the set of EPB standards is defined in the Introduction to the standards.

Brief articles on the subject can be found in [50] to [51].

Accompanying spreadsheets

An extensive spreadsheet was produced on ISO 52016-1, covering both the hourly and the monthly calculation method. Examples of the calculation sheet can be found in this document. This spreadsheet (including possible updated version) is available at www.epb.center.

No spreadsheet was produced on ISO 52017-1, because this EPB standard (with reference hourly thermal balance calculation procedures) is not directly used for calculations.

History of this Technical Report and the accompanying standards

The first series of standards on thermal and hygrothermal properties of building components and elements were prepared by ISO Technical Committee 163 in the 1980s, as a result of growing global concern on future fuel shortages and inadequate health and comfort levels in buildings. During the following decades these first standards were revised and new standards were added, to cope with new developments and additional needs. From the 1990s on, many of these standards were developed in close collaboration with CEN (see further on).

As part of the Mandate 343 of the EC to CEN to support the EPBD (2003)[26], the series of standards were scrutinized to see which changes would be needed for the purpose of supporting the EPBD [25]. This resulted in new versions of a number of standards, most of them published in 2007. The standards were further revised in the 2010s as part of Mandate 480 of the EC to CEN [28], to support the EPBD recast [29].

More extensive background information and history of the set of EPB standards is given in the Introduction to ISO/TR 52000-2[4], the Technical Report accompanying the overarching EPB standard and in recent ISO papers ([47],[48],[49]).

Application area of ISO 52016-1:

ISO 52016-1 presents a coherent set of calculation methods at different levels of detail, for the (sensible) energy needs for the space heating and cooling and (latent) energy needs (de-)humidification of a building and/or internal temperatures and heating and/or cooling loads.

The effect of specific system properties can also be taken into account, such as the maximum heating or cooling power, and the impact of specific system control provisions. This leads to **system-specific energy loads and needs**, in addition to the **basic energy loads and needs**.

ISO 52016-1 contains both hourly and monthly calculation procedures. These are closely linked: they use as much as possible the same input data and assumptions. And the hourly method produces as additional output the key monthly quantities needed to generate parameters for the monthly calculation method. This means that a number of (nationally) representative cases can be run with the hourly method and from the key monthly quantities the monthly correlation factors can be derived

ISO 52016-1 has been developed for buildings that are, or are assumed to be, heated and/or cooled for the thermal comfort of people, but can be used for other types of building or other types of use (e.g. industrial, agricultural, swimming pool), as long as appropriate input data are chosen and the impact of special physical conditions on the accuracy is taken into consideration.

NOTE 1 For instance, it can be used when a special model is needed but is missing.

Depending on the purpose of the calculation, it can be decided nationally to provide specific calculation rules for thermal zones that are dominated by process heat (e.g. indoor swimming pool, computer/server room or kitchen in a restaurant).

NOTE 2 For instance, in the case of a building energy certificate and/or building permit, e.g. by ignoring the process heat or using default process heat for certain processes (e.g. shops: freezers, lighting in shop window).

Design heating and cooling load

Upon request of CEN/TC 156, the method to calculate the design heating and cooling and latent heat load from prEN 16798-11:2015[21], prepared by CEN/TC 156, has been integrated in ISO 52016-1.

ISO 52016-1 includes specification of the method and the boundary conditions for the calculation of the design heating and cooling load, including latent load, as a basis for the dimensioning of equipment on zone level and on central level for cooling and dehumidification. It specifies also the methods and conditions for the calculation of the humidification load.

The method given for the design heat load is intended especially for the cases where the cooling load calculation needs to be done (for instance when cooling is necessary) and/or an hourly calculation is used for the energy needs calculation. The principle idea is that there is only one method needed for load and energy calculations for heating and cooling in case of an hourly calculation interval.

A simplified steady state calculation method for the design heat load is given in EN 12831-1[22].

Link between the two standards, ISO 52017-1 and ISO 52016-1

In short, ISO 52017-1 contains a generic (reference) hourly calculation method for building (zone). This method is based on and replaces that in ISO 13791. This document contains no specific assumptions, boundary conditions, specific simplifications or input data that are not needed to apply the generic calculation method. Compared with ISO 13791, the heat flows describing the energy needs for heating and cooling are added to increase the application range. This document does not include validation cases (unlike ISO 13791). For validation, specific assumptions and input data would need to be given that only apply to the validation cases. To keep a clear distinction between the generic method and a specific application, verification and validation cases are adopted in ISO 52016-1.

ISO 52016-1 replaces the information in ISO 13790:2008[5]. It contains a (new) hourly calculation method and a monthly calculation method. The hourly calculation method is a specific application of the generic method provided in ISO 52017-1. ISO 52016-1 further contains specific boundary conditions, specific simplifications and input data for the application: calculation of energy needs for heating and cooling. Amended simplifications and input data are provided for the application to calculate the design heating and design cooling load and (e.g. summer) internal temperatures.

In this way the generic calculation method (ISO 52017-1) is clearly separated from the specific application with all specific assumptions, simplifications and specific input data (ISO 52016-1). Due to these changes, ISO 52016-1 together with ISO 52017-1 also replace ISO 13792.

The hourly method in ISO 52016-1 produces as additional output the key parameters needed to generate parameters for the monthly calculation method. This means that a number of (nationally) representative cases can be run with the hourly method and from the output, the key monthly parameters for the different cases, the monthly correlation factors can be derived.

See flowchart in [Figure 1](#).

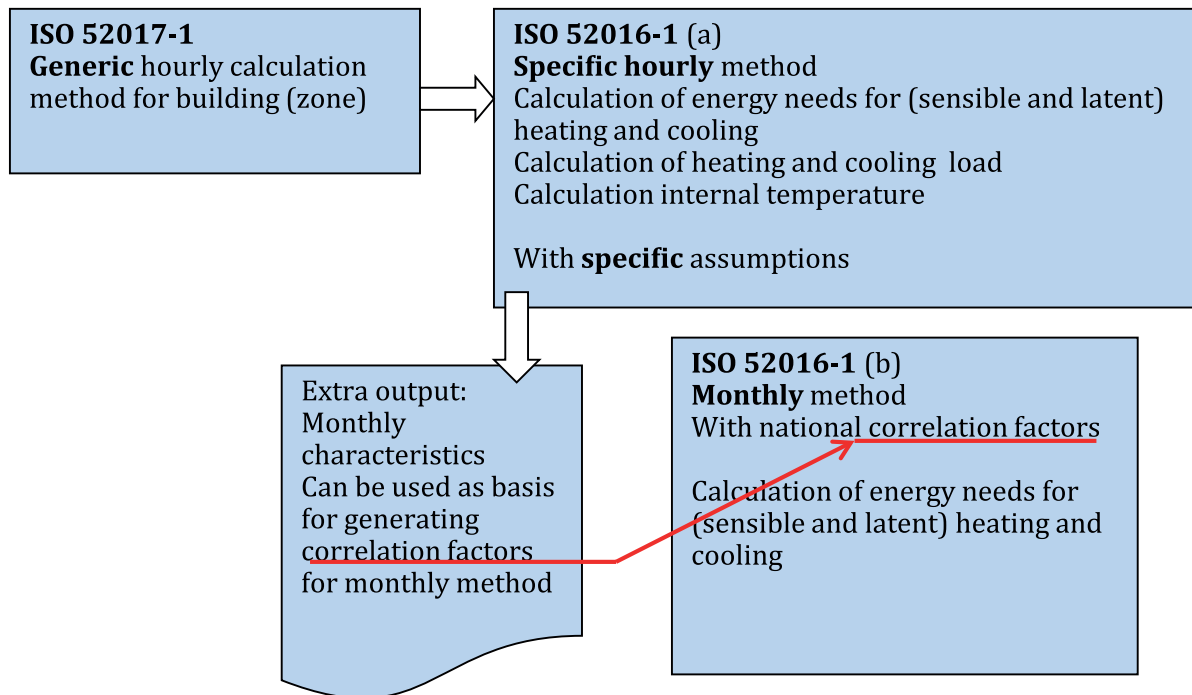


Figure 1 — Relationship between ISO 52016-1 and ISO 52017-1

Input-output relations between the two standards and other standards of the set of EPB standards

As explained above, ISO 52017-1 plays a role as a reference calculation method. For instance as reference method for ISO 52016-1.

For the input-output relations with the other EN and ISO standards in the set of EPB standards, only ISO 52016-1 is relevant.

There are many inputs from and many interactions with many other EPB standards. More details are given in the core of this document.

See flowchart in [Figure 2](#).

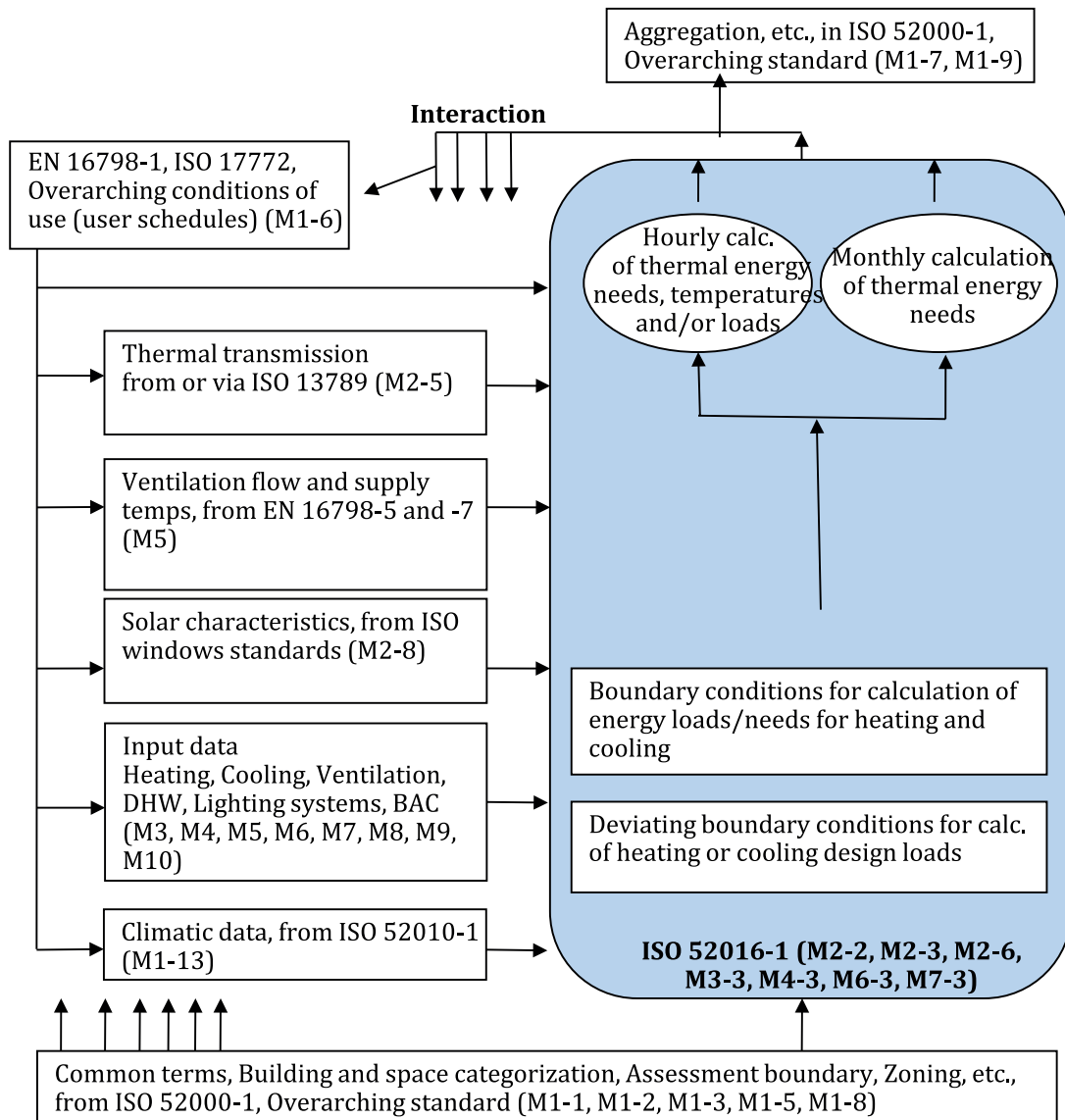


Figure 2 — Relationship between ISO 52016-1 and other EPB standards

NOTE 3 The list of referenced standards can be found in ISO 52016-1:2017, Table B.1.

Energy performance of buildings — Energy needs for heating and cooling, internal temperatures and sensible and latent heat loads —

Part 2:

Explanation and justification of ISO 52016-1 and ISO 52017-1

1 Scope

This document contains information to support the correct understanding and use of ISO 52016-1 and ISO 52017-1.

These documents give calculation methods for the assessment of:

- the (sensible and latent) energy load and need for heating and cooling, based on hourly calculations;
- the (sensible and latent) energy need for heating and cooling, based on monthly calculations (ISO 52016-1);
- the internal temperature, based on hourly calculations; and
- the design (sensible and latent) heating and cooling load, based on hourly calculations.

This document does not contain any normative provisions.

NOTE A description of the rationale behind the reorganization of the cluster of strongly related and partly overlapping ISO and CEN standards is given in [Annex H](#).

2 Normative references

The following documents are referred to in the text in such a way that some or all of their content constitutes requirements of this document. For dated references, only the edition cited applies. For undated references, the latest edition of the referenced document (including any amendments) applies.

More information on the use of EPB module numbers, in all EPB standards, for normative references to other EPB standards is given in ISO/TR 52000-2[4].

ISO 52016-1:2017, *Energy performance of buildings — Energy needs for heating and cooling, internal temperatures and sensible and latent heat loads — Part 1: Calculation procedures*

ISO 52017-1, *Energy performance of buildings — Sensible and latent heat loads and internal temperatures — Part 1: Generic calculation procedures*

koniec náhľadu – text ďalej pokračuje v platenej verzii STN