

| | | |
|------------|-----------------------------------------------------------------------------------------------------------------------|-----------------------------------------|
| STN | Požiarnobezpečnostné inžinierstvo Verifikačný a validačný protokol pre požiarne evakuačné modely budov | STN ISO 20414 92 0116 |
|------------|-----------------------------------------------------------------------------------------------------------------------|-----------------------------------------|

Fire safety engineering

Verification and validation protocol for building fire evacuation models

Ingénierie de la sécurité incendie

Protocole de vérification et de validation de modèles d'évacuation dans un bâtiment en cas d'incendie

Táto slovenská technická norma obsahuje anglickú verziu medzinárodnej normy ISO 20414: 2020 a má postavenie oficiálnej verzie.

This Slovak standard includes the English version of the International standard ISO 20414: 2020 and has the status of the official version.



136554

Úrad pre normalizáciu, metrológiu a skúšobníctvo Slovenskej republiky, 2023

Slovenská technická norma a technická normalizačná informácia je chránená zákonom č. 60/2018 Z. z. o technickej normalizácii.

Anotácia

Tento dokument popisuje protokol na verifikáciu a validáciu požiarne evakuačných modelov budov. Tento dokument väčšinou určuje súčasti (komponenty) evakuačných modelov, ako sú v mikroskopických modeloch (na báze agentov). Napriek tomu ho možno prijať (úplne alebo čiastočne) pre makroskopické modely, ak je model schopný reprezentovať uvažované súčasti (komponenty).

Oblasť použitia evakuačných modelov, posudzovaných v tomto dokumente, zahŕňa návrh budov založený na základných vlastnostiach (parametroch) a preskúmaní účinnosti plánovania evakuácie a evakuačných postupov. Postup evakuácie je reprezentovaný evakuačnými modelmi, v ktorých pohyb osôb a ich vzájomné pôsobenie (interakcia) s prostredím využívajú správanie osôb v teóriách požiarov a empirických pozorovaniach [5]. Simulácia evakuácie je reprezentovaná pomocou matematických modelov a/alebo pravidiel agent – agent a agent – prostredie.

Oblasť použitia tohto dokumentu sa vzťahuje na budovy. Tento dokument nie je určený na pokrytie hľadísk (aspektov) dopravných systémov v pohybe (napr. vlaky, lode), pretože na riešenie simulácie správania osôb počas evakuácie v týchto typoch systémov môžu byť potrebné špeciálne (špecifické) dodatočné skúšky pre tento účel (ad doc) [6].

Tento dokument obsahuje zoznam prvkov (komponentov) pre verifikáciu a validačné skúšky, ako aj metodiku analýzy a posudzovania presnosti spojenej s evakuačnými modelmi. Zahrnutý je aj postup analýzy kritérií prijateľnosti (akceptovateľnosti).

V tomto dokumente je uvedený úplný zoznam prvkov (komponentov) na skúšanie, pretože rozsah skúšania nebol umelo obmedzený na súbor priamych (zrejmych) aplikácií. Uplatňovanie evakuačných modelov ako návrhového nástroja však môže byť ovplyvnené počtom uvažovaných premenných ovplyvňujúcich správanie osôb. Vysoký počet vplyvov môže brániť prijatiu (akceptovaniu) dosiahnutých výsledkov vzhľadom na úroveň zložitosti (komplexnosti) spojenú s výsledkami. Jednoduchšie metódy výpočtu, ako sú makroskopické modely, kapacitné analýzy alebo výpočty prúdu, sú v menšej miere ovplyvnené potrebou zamerať sa na vysoko verné modelovanie. Naproti tomu sofistikovanejšie metódy výpočtu (t. j. modely založené na agentoch) sa viac spoliehajú na schopnosť preukázať, že simulácia je schopná reprezentovať rôzne vznikajúce správanie. Z tohto dôvodu sú prvky (komponenty) na skúšanie rozdelené do rôznych kategórií, čo umožňuje skúšajúcemu vyskúšať evakuačný model vo vzťahu k stupňu sofistikovanosti zabudovanému do modelu, ako aj konkrétne rozsahu aplikácie modelu.

V prílohe A je uvedená šablóna, ktorá poskytuje používateľské návody týkajúce sa formátu na predkladanie výsledkov skúšok a vzorové uplatňovania verifikačných a validačných skúšok sú uvedené v prílohe B.

Národný predhovor

Dokumenty týkajúce sa požiarnebezpečnostného inžinierstva sú na medzinárodnej úrovni spracovávané v subkomisii ISO/TC 92/SC 4 Požiarnebezpečnostné inžinierstvo a v európskej pracovnej skupine CEN/TC 127 WG 8 Požiarnebezpečnostné inžinierstvo – angl. Fire safety engineering (ďalej len „FSE“).

Požiarnebezpečnostné inžinierstvo je určené pre nové inovatívne výrobky, návrhy a projekty a prevádzku, kde nie sú určené požiadavky požiarnej bezpečnosti stavieb.

Požiarnebezpečnostné inžinierstvo je alternatívou predpisových (právných a normatívnych) riešení. Je zapracované v mnohých európskych a medzinárodných normách a normatívnych dokumentoch, (napr. časti eurokódov, týkajúcich sa účinkov požiaru) prijatých do sústavy STN a pokynov EÚ na požiar.

Požiarnebezpečnostné inžinierstvo sa používa v súlade s zákonom č. 314/2000 Z. z. o ochrane pred požiarimi. Národné predpisy a normy umožňujú ich používanie za špecificky určených podmienok.

Požiarnobezpečnostné inžinierstvo ako podrobné alternatívne riešenie je možné používať na návrh komplexných alebo čiastkových problémov požiarnobezpečnostného inžinierstva.

Pre správne používanie je nevyhnutná znalosť najnovších základných dokumentov FSE a spracovanie požiarnymi inžiniermi – požiarnymi expertmi.

Tieto dokumenty FSE sú určené pre vedeckých pracovníkov, technické inžinierske vzdelávanie, architektov a stavebných inžinierov, účastníkov stavebného procesu, schvaľujúce orgány a manažment prevádzok budov a inžinierskych diel.

Normatívne referenčné dokumenty

Nasledujúce dokumenty, celé alebo ich časti, sú v tomto dokumente normatívnymi odkazmi a sú nevyhnutné pri jeho používaní. Pri datovaných odkazoch sa použije len citované vydanie. Pri nedatovaných odkazoch sa použije najnovšie vydanie citovaného dokumentu (vrátane všetkých zmien).

POZNÁMKA 1. – Ak bola medzinárodná publikácia zmenená spoločnými modifikáciami, čo je indikované označením (mod), použije sa príslušná EN/HD.

POZNÁMKA 2. – Aktuálne informácie o platných a zrušených STN a TNI možno získať na webovom sídle www.unms.sk.

ISO 13943 prijatá ako STN EN ISO 13943 Požiarna bezpečnosť. Slovník (ISO 13943) (92 0102)

ISO 16730-1 prijatá ako STN ISO 16730-1 Požiarnobezpečnostné inžinierstvo. Postupy a požiadavky na verifikáciu a validáciu výpočtových metód. Časť 1: Všeobecne (92 0109)

ISO/IEC 25000 prijatá ako STN ISO/IEC 25000 Softvérové inžinierstvo. Požiadavky na kvalitu a hodnotenie kvality softvérového produktu (SQuaRE). Návod na SQuaRE (36 9792)

Vypracovanie slovenskej technickej normy

Spracovateľ: Stavebná fakulta STU v Bratislave,
doc. Ing. Juraj Olbřímek, PhD., Ing. Zuzana Lacová, PhD.

Úrad pre normalizáciu, metrológiu a skúšobníctvo SR, Bratislava

Technická komisia: TK 119 Hodnotenie požiarnej bezpečnosti materiálov a výrobkov

Contents

Page

| | |
|-----------------------------------------------------------------------------------------|-----------|
| Foreword | iv |
| Introduction | v |
| 1 Scope | 1 |
| 2 Normative references | 1 |
| 3 Terms and definitions | 2 |
| 4 Documentation | 5 |
| 4.1 General..... | 5 |
| 4.2 Technical documentation..... | 6 |
| 4.3 User's manual..... | 8 |
| 5 Verification | 9 |
| 5.1 General..... | 9 |
| 5.2 Basic components..... | 11 |
| 5.3 Behavioural components..... | 24 |
| 5.4 Fire-people interaction components..... | 29 |
| 5.5 Building-specific components..... | 31 |
| 6 Validation | 35 |
| 6.1 General..... | 35 |
| 6.2 Methods for the analysis of results..... | 36 |
| 6.3 Component validation..... | 40 |
| 6.4 Global validation..... | 46 |
| 7 Review of the theoretical and experimental basis of probabilistic models | 47 |
| 8 Quality assurance | 48 |
| 9 Quantification of uncertainty | 49 |
| 10 Acceptance criteria | 51 |
| Annex A (informative) Reporting Template | 52 |
| Annex B (informative) Examples of application | 55 |
| Bibliography | 64 |

Foreword

ISO (the International Organization for Standardization) is a worldwide federation of national standards bodies (ISO member bodies). The work of preparing International Standards is normally carried out through ISO technical committees. Each member body interested in a subject for which a technical committee has been established has the right to be represented on that committee. International organizations, governmental and non-governmental, in liaison with ISO, also take part in the work. ISO collaborates closely with the International Electrotechnical Commission (IEC) on all matters of electrotechnical standardization.

The procedures used to develop this document and those intended for its further maintenance are described in the ISO/IEC Directives, Part 1. In particular, the different approval criteria needed for the different types of ISO documents should be noted. This document was drafted in accordance with the editorial rules of the ISO/IEC Directives, Part 2 (see www.iso.org/directives).

Attention is drawn to the possibility that some of the elements of this document may be the subject of patent rights. ISO shall not be held responsible for identifying any or all such patent rights. Details of any patent rights identified during the development of the document will be in the Introduction and/or on the ISO list of patent declarations received (see www.iso.org/patents).

Any trade name used in this document is information given for the convenience of users and does not constitute an endorsement.

For an explanation of the voluntary nature of standards, the meaning of ISO specific terms and expressions related to conformity assessment, as well as information about ISO's adherence to the World Trade Organization (WTO) principles in the Technical Barriers to Trade (TBT), see www.iso.org/iso/foreword.html.

This document was prepared by Technical Committee ISO/TC 92, *Fire safety*, Subcommittee SC 04, *Fire safety engineering*.

Any feedback or questions on this document should be directed to the user's national standards body. A complete listing of these bodies can be found at www.iso.org/members.html.

Introduction

The objective of fire safety engineering is to assist in the achievement of an acceptable predicted level of fire safety. Part of this work involves the use of calculation methods and models to predict human behaviour in case of a fire. Evacuation analyses are performed to mitigate the adverse effects of a fire on people. The main principles that are necessary for establishing credibility of these evacuation models are verification and validation. This document addresses the procedures for verification and validation of evacuation models. The context of applications addressed in this document is building fires.

Evacuation models are applied to establish the time for an evacuating population to reach a place of safety. Evacuation models are also used to examine evacuation dynamics of different scenarios and to evaluate the effectiveness of procedural solutions.

Evacuation models present different levels of sophistication, ranging from simplified methods (such as capacity analysis or flow calculations) to complex computational agent-based models. Microscopic models represent evacuees in computer models as agents. Each evacuee is represented by an autonomous agent with certain properties, e.g. pre-evacuation time and walking speed. A crowd is built up of a group of agents acting together in a multi-agent-based evacuation model. Agents act according to behavioural rules defined in the model. These rules can represent agent-to-agent or agent-to-environment interactions. The macroscopic approach instead represents a crowd at an aggregate level, generally adopting analogies with other physical systems (e.g. hydraulic flows). In addition, in relation to their modelling assumptions in terms of space representation (coarse or fine network approach, continuous approach or hybrid), evacuation models are capable of representing geometries with a different level of accuracy.

Evacuation models operate at three main levels when they produce results, namely 1) Individual Level, 2) Aggregate Level and 3) Scenario level. The individual level deals with the simulation of the actions performed by each agent. The aggregate level concerns the interactions between agents or the interaction between agents and simulated objects which can influence the local conditions. The scenario level relates to the results that summarize the conditions at the end of the simulation, i.e. the final outcome of the model and the layout in which the evacuation takes place.

Potential users of evacuation models and those who are asked to accept the results need to be assured that these models provide sufficiently accurate predictions of human behaviour in fire. To provide this assurance, evacuation models being considered need to be verified for accuracy and validated for capability to reproduce the phenomena. A rigorous verification and validation process are a key element of quality assurance.

There is no fixed requirement of accuracy that is applicable to all possible applications of evacuation models. The accuracy level depends on the purposes for which an evacuation model is to be used. It is not necessary that all evacuation models demonstrate high accuracy in all their components as long as the error, uncertainty and limits of applicability of the models are known. The accuracy of the evacuation model predictions is also highly dependent on the competency of the user, e.g. model configuration, data input selection, results interpretation.

This document focuses on the predictive accuracy of evacuation models. However, other factors such as ease of use, relevance, completeness and status of development play an important role in the assessment of the use of the most appropriate model for a particular application. The assessment and suitability of evacuation models for the simulation of human behaviour in fire in several contexts of applications is supported by the use of a quality-assurance methodology to ensure that the requirements are being fulfilled. Tests and methods for measuring attributes of the relevant model characteristics are outlined in this document.

This document is complementary to ISO 16730-1, in which the procedures and requirements for verification and validation of calculation methods in fire safety engineering are addressed at a general level. This document should also be used in parallel with the relevant ISO documents in which design scenarios are discussed (ISO 16733-1 and ISO/TS 29761).

ISO 20414:2020(E)

This document is intended to have the following users:

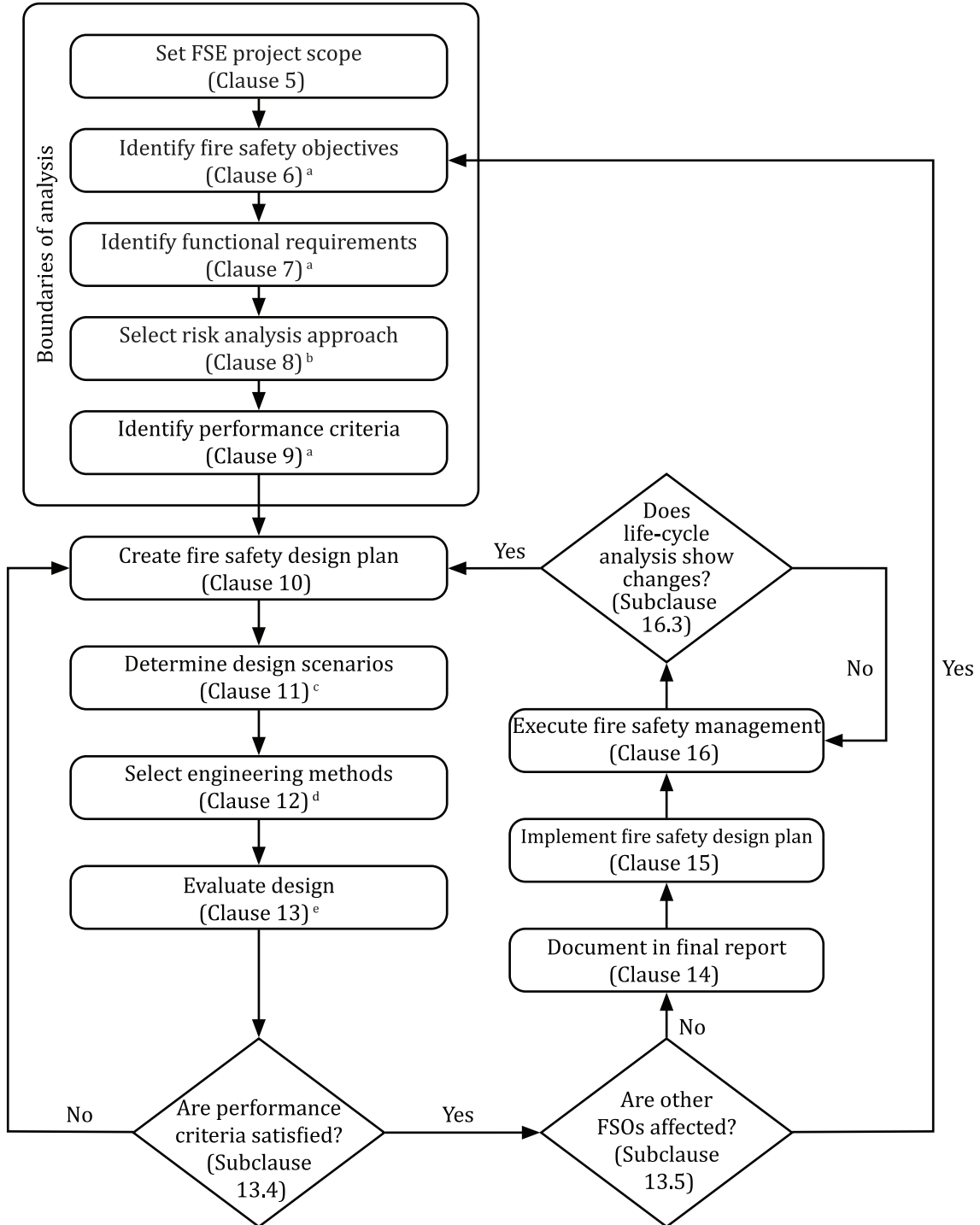
- a) Conceptual model developers (individuals or organizations that perform development activities, including requirements analysis, design and testing of components): These users can use this document to document the usefulness of a particular fire evacuation model for building applications. Part of the model development process includes the identification of precision and limitations of applicability, and independent testing.

NOTE Model developers generally have access to more model components than a user, given their work in the model development phase.

- b) Software model developers (individuals or organizations that maintain computer models, supply computer models, and those who evaluate computer model quality as part of quality assurance and quality control): These users can use this document to document the software features and capabilities and to assure users that an appropriate testing protocol is followed to ensure quality of the application tools by documenting the verification and validation of the model pursuant to this document,
- c) Model users (individuals or organizations that use evacuation models to perform a fire safety analysis): These users can use models verified and validated pursuant to this document to assure themselves that they are using an appropriate model for a particular application and that it provides adequate accuracy.
- d) Developers of performance codes and standards: These users can use this document to specify the verification and validation procedure for evacuation models used in fire safety designs for a given set of applications.
- e) Approving bodies/officials (individuals or organizations that review or approve the use of evacuation models): These users can use this document as a basis to ensure that the results submitted show clearly that the evacuation model is used within its applicability limits and has an acceptable level of accuracy.
- f) Educators: These users can use this document to demonstrate the application and acceptability of evacuation models being taught.

General principles are described in ISO 23932-1, which provides a performance-based methodology for engineers to assess the level of fire safety for new or existing built environments. Fire safety is evaluated through an engineered approach based on the quantification of the behaviour of fire and knowledge of the consequences of such behaviour on life safety, property and the environment. ISO 23932-1 provides the process (necessary steps) and essential elements to design a robust performance-based fire safety programme.

ISO 23932-1 is supported by a set of fire safety engineering International Standards on the methods and data required to undertake the steps in a fire safety engineering design as summarized in ISO 23932-1 and shown in [Figure 1](#) (taken from ISO 23932-1). This set of International Standards is referred to as the Global fire safety engineering analysis and information system. This global approach and system of standards provides an awareness of the interrelationships between fire evaluations when using the set of fire safety engineering International Standards.



Key

- ^a See also ISO/TR 16576 (Examples).
- ^b See also ISO 16732-1, ISO 16733-1, ISO/TS 29761.
- ^c See also ISO 16732-1, ISO 16733-1, ISO/TS 29761.
- ^d See also ISO/TS 13447, ISO 16730-1, ISO/TR 16730-2 to 5 (Examples), ISO 16734, ISO 16735, ISO 16736, ISO 16737, ISO/TR 16738, ISO 24678-6.
- ^e See also ISO/TR 16738, ISO 16733-1.

Figure 1 — Flow chart of the fire safety engineering process

Fire safety engineering — Verification and validation protocol for building fire evacuation models

1 Scope

This document describes a protocol for the verification and validation of building fire evacuation models. This document mostly addresses evacuation model components as they are in microscopic (agent-based) models. Nevertheless, it can be adopted (entirely or partially) for macroscopic models if the model is able to represent the components under consideration.

The area of application of the evacuation models discussed in this document includes performance-based design of buildings and the review of the effectiveness of evacuation planning and procedures. The evacuation process is represented with evacuation models in which people's movement and their interaction with the environment make use of human behaviour in fire theories and empirical observations^[5]. The simulation of evacuation is represented using mathematical models and/or agent-to-agent and agent-to-environment rules.

The area of application of this document relates to buildings. This document is not intended to cover aspects of transportation systems in motion (e.g. trains, ships) since specific ad-hoc additional tests may be required for addressing the simulation of human behaviour during evacuation in these types of systems^[6].

This document includes a list of components for verification and validation testing as well as a methodology for the analysis and assessment of accuracy associated with evacuation models. The procedure for the analysis of acceptance criteria is also included.

A comprehensive list of components for testing is presented in this document, since the scope of the testing has not been artificially restricted to a set of straightforward applications. Nevertheless, the application of evacuation models as a design tool can be affected by the numbers of variables affecting human behaviour under consideration. A high number of influences can hamper the acceptance of the results obtained given the level of complexity associated with the results. Simpler calculation methods, such as macroscopic models, capacity analyses or flow calculations, are affected to a lower extent by the need to aim at high fidelity modelling. In contrast, more sophisticated calculation methods (i.e. agent-based models) rely more on the ability to demonstrate that the simulation is able to represent different emergent behaviours. For this reason, the components for testing are divided into different categories, enabling the evacuation model tester to test an evacuation model both in relation to the degree of sophistication embedded in the model as well as the specific scope of the model application.

In [Annex A](#), a reporting template is provided to provide guidance to users regarding a format for presenting test results and exemplary application of verification and validation tests are presented in [Annex B](#).

2 Normative references

The following documents are referred to in the text in such a way that some or all of their content constitutes requirements of this document. For dated references, only the edition cited applies. For undated references, the latest edition of the referenced document (including any amendments) applies.

ISO 13943, *Fire safety — Vocabulary*

ISO 16730-1, *Fire safety engineering — Procedures and requirements for verification and validation of calculation methods — Part 1: General*

ISO/IEC 25000, *Systems and software engineering — Systems and software Quality Requirements and Evaluation (SQuaRE) — Guide to SQuaRE*

koniec náhľadu – text ďalej pokračuje v platenej verzii STN