

STN	Zdravotnotechnické armatúry Meranie funkčného výkonu vodovodných batérií a sprch	STN EN 18021 13 7197
------------	-------------------------------------------------------------------------------------------------	----------------------------------------

Sanitary tapware - Measurement of functional performance of taps and showers

Táto norma obsahuje anglickú verziu európskej normy.
This standard includes the English version of the European Standard.

Táto norma bola oznámená vo Vestníku ÚNMS SR č. 09/25

Obsahuje: EN 18021:2025

141104

Úrad pre normalizáciu, metrológiu a skúšobníctvo Slovenskej republiky, 2025
Slovenská technická norma a technická normalizačná informácia je chránená zákonom č. 60/2018 Z. z. o technickej normalizácii
v znení neskorších predpisov.

EUROPEAN STANDARD

EN 18021

NORME EUROPÉENNE

EUROPÄISCHE NORM

July 2025

ICS 91.140.70

English Version

Sanitary tapware - Measurement of functional performance of taps and showers

Robinetterie sanitaire - Mesure des performances
fonctionnelles des robinets et des douches

Sanitärarmaturen - Messung der Funktionsfähigkeit
von Armaturen und Brausen

This European Standard was approved by CEN on 4 May 2025.

CEN members are bound to comply with the CEN/CENELEC Internal Regulations which stipulate the conditions for giving this European Standard the status of a national standard without any alteration. Up-to-date lists and bibliographical references concerning such national standards may be obtained on application to the CEN-CENELEC Management Centre or to any CEN member.

This European Standard exists in three official versions (English, French, German). A version in any other language made by translation under the responsibility of a CEN member into its own language and notified to the CEN-CENELEC Management Centre has the same status as the official versions.

CEN members are the national standards bodies of Austria, Belgium, Bulgaria, Croatia, Cyprus, Czech Republic, Denmark, Estonia, Finland, France, Germany, Greece, Hungary, Iceland, Ireland, Italy, Latvia, Lithuania, Luxembourg, Malta, Netherlands, Norway, Poland, Portugal, Republic of North Macedonia, Romania, Serbia, Slovakia, Slovenia, Spain, Sweden, Switzerland, Türkiye and United Kingdom.



EUROPEAN COMMITTEE FOR STANDARDIZATION
COMITÉ EUROPÉEN DE NORMALISATION
EUROPÄISCHES KOMITEE FÜR NORMUNG

CEN-CENELEC Management Centre: Rue de la Science 23, B-1040 Brussels

EN 18021:2025 (E)

Contents	Page
European foreword	4
Introduction	5
1 Scope	6
2 Normative references	8
3 Terms and definitions	8
4 Standard use cases	11
5 Instructions	13
5.1 General	13
5.2 Replacement of components	13
6 Technical criteria	13
6.1 General	13
6.2 Apparatus	15
6.3 Energy calculation	15
6.4 Use of flow regulators	17
7 Taps	17
7.1 General	17
7.2 Flow rate testing	17
7.2.1 Principle	17
7.2.2 Apparatus	17
7.2.3 Procedure	17
7.3 Functional test	18
7.3.1 Nominal flow rate	18
7.3.2 Water break	18
7.3.3 Boost function	19
7.3.4 Cold start	20
7.3.5 Temperature break	20
7.3.6 Pressure independency	21
7.3.7 Sensor function	21
7.3.8 Time flow	22
7.3.9 Sensitivity single lever taps	23
7.3.10 Sensitivity thermostatic mixing valves	23
7.3.11 Fidelity	23
7.4 Rinsing performance	23
7.4.1 General	23
7.4.2 Requirement	24
8 Shower outlets	24
8.1 General	24
8.2 Flow rate	24
8.2.1 Principle	24
8.2.2 Apparatus	25
8.2.3 Procedure	25
8.3 Functional test	25
8.3.1 Nominal flow rate	25

8.3.2	Boost function	25
8.3.3	Pressure independency	26
8.3.4	Spray coverage	26
8.3.5	Spray force	29
8.3.6	Spray dripping	31
8.3.7	Spray pattern	31
8.4	Rinsing performance	32
8.4.1	General	32
8.4.2	Requirement	32
9	Shower sets	32
9.1	General	32
9.2	Rinsing performance	32
9.2.1	General	32
9.2.2	Requirement	32
10	Shower systems	33
10.1	General	33
10.2	Flow rate	33
10.2.1	General	33
10.2.2	Principle	33
10.2.3	Apparatus	33
10.2.4	Procedure	33
10.3	Functional test	33
10.3.1	Nominal flow rate	33
10.3.2	Pressure independency	33
10.3.3	Spray coverage	34
10.3.4	Spray force	34
10.3.5	Spray dripping	34
10.3.6	Spray pattern	34
10.3.7	Water break	34
10.3.8	Boost function	34
10.3.9	Temperature break	34
10.3.10	Sensor function	34
10.3.11	Time flow	34
10.4	Rinsing performance	35
10.4.1	General	35
10.4.2	Requirements	35
Annex A (informative) Water and energy saving functions and saving potentials		36
Annex B (informative) Tolerances for market surveillance purposes		38
Annex C (informative) Explanation of requirements for lower flow rate products		39
Bibliography		40

EN 18021:2025 (E)**European foreword**

This document (EN 18021:2025) has been prepared by Technical Committee CEN/TC 164 “Water supply”, the secretariat of which is held by AFNOR.

This European Standard shall be given the status of a national standard, either by publication of an identical text or by endorsement, at the latest by January 2026, and conflicting national standards shall be withdrawn at the latest by January 2026.

Attention is drawn to the possibility that some of the elements of this document may be the subject of patent rights. CEN shall not be held responsible for identifying any or all such patent rights.

This document has been prepared under a standardization request addressed to CEN by the European Commission. The Standing Committee of the EFTA States subsequently approves these requests for its Member States.

Any feedback and questions on this document should be directed to the users’ national standards body. A complete listing of these bodies can be found on the CEN website.

According to the CEN-CENELEC Internal Regulations, the national standards organisations of the following countries are bound to implement this European Standard: Austria, Belgium, Bulgaria, Croatia, Cyprus, Czech Republic, Denmark, Estonia, Finland, France, Germany, Greece, Hungary, Iceland, Ireland, Italy, Latvia, Lithuania, Luxembourg, Malta, Netherlands, Norway, Poland, Portugal, Republic of North Macedonia, Romania, Serbia, Slovakia, Slovenia, Spain, Sweden, Switzerland, Türkiye and the United Kingdom.

Introduction

In respect of potential adverse effects on the quality of water intended for human consumption, caused by the products covered by this document.

This document provides no information as to whether the products can be used without restriction in any of the Member States of the EU or EFTA.

While awaiting the adoption of verifiable European criteria, existing national regulations concerning the use and/or the characteristics of these products remain in force.

This document defines the test procedures for the calculation of energy and measurements of functional performance for taps, shower outlets, shower sets and shower systems in order to identify energy efficient products.

This document does not define all requirements since these will be set by future EU legislation.

EN 18021:2025 (E)**1 Scope**

This document acknowledges the field of application for taps, shower outlets, shower sets and shower systems used in water supply systems with a pressure range of (0,05 to 1,0) MPa [(0,5 to 10) bar].

The tests described in this document are type tests (laboratory tests) and not quality control tests carried out during manufacture.

This document covers:

- PN10 taps;
- PN5 shower outlets;
- PN5 shower sets;
- PN10 shower systems.

The following products are excluded from this document:

- shower taps on its own;
- taps for filling bathtubs;
- the tub filling function of combined taps;
- the function of a tap that delivers e.g. boiling water or sparkling water, etc.;
- body or side jet showers.

The conditions of use for taps and shower systems are given in Table 1. The conditions of use for shower sets and shower outlets are given in Table 2.

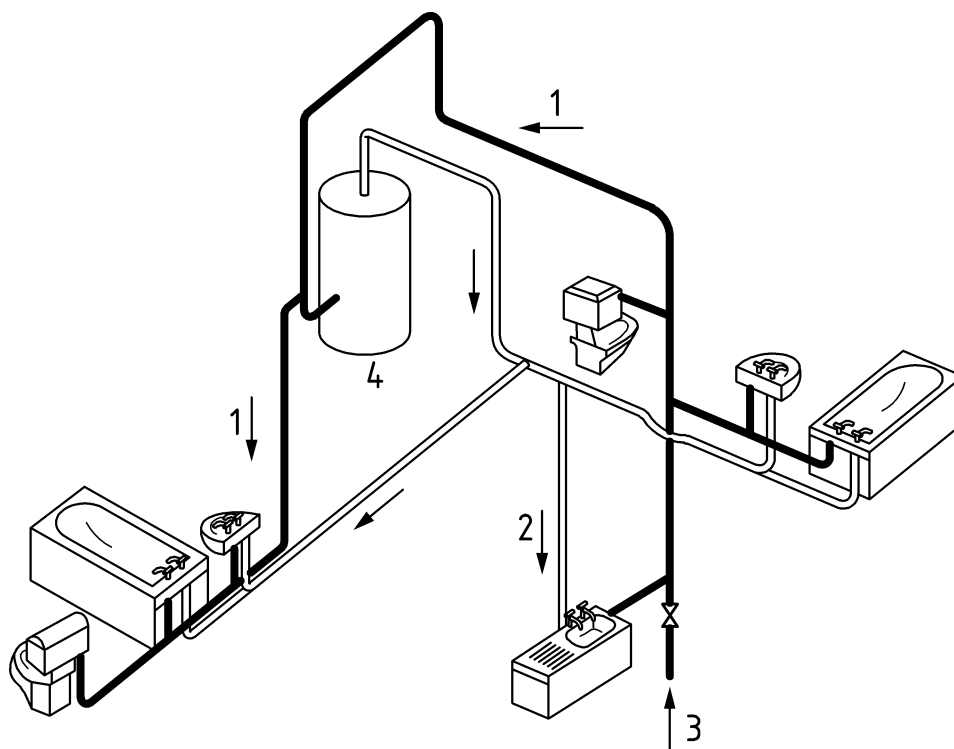
Table 1 — Conditions of use for taps and shower systems

Water supply system	Operating range of taps and shower systems	
	Limits	Recommended
see Figure 1	dynamic pressure ≥ 0,05 MPa (0,5 bar) static pressure ≤ 1,0 MPa (10,0 bar)	dynamic pressure ^b (0,1 to 0,5) MPa [(1,0 to 5,0) bar]
temperature	≤ 70 °C ^a	≤ 65 °C
^a This maximum temperature limit can only be reached for short durations not greater than 1 h. ^b Measured at the point of discharge.		

NOTE Taps and shower systems for use at pressures lower than those in Table 1 are not covered by this standard.

Table 2 — Conditions of use for shower outlets and shower sets

Water supply system	Operating range of showers	
	Limits	Recommended
see Figure 1	dynamic pressure ≥ 0,05 MPa (0,5 bar) static pressure ≤ 0,5 MPa (5,0 bar)	dynamic pressure (0,1 to 0,3) MPa [(1,0 to 3,0) bar]
temperature	≤ 70 °C ^a	≤ 42 °C
^a This maximum temperature limit can only be reached for short durations not greater than 1 h.		

**Key**

- 1 cold water
- 2 hot water
- 3 mains supply pipe (supply pressures up to 10 bar)
- 4 water heater

Figure 1 — Supply system with a pressure range of (0,05 to 1,0) MPa [(0,5 to 10) bar]

Health and quality requirements in accordance to European and national legislation for final materials in contact with water intended for human consumption are not covered by this document.

EN 18021:2025 (E)**2 Normative references**

The following documents are referred to in the text in such a way that some or all of their content constitutes requirements of this document. For dated references, only the edition cited applies. For undated references, the latest edition of the referenced document (including any amendments) applies.

EN 816, *Sanitary tapware — Automatic shut-off valves PN 10*

EN 817, *Sanitary tapware — Mechanical mixing valves (PN 10) — General technical specifications*

EN 1111, *Sanitary tapware — Thermostatic mixing valves (PN 10) — General technical specification*

EN 1112, *Sanitary tapware — Shower outlets for sanitary tapware for water supply systems of type 1 and type 2 — General technical specification*

EN 15091:2024, *Sanitary tapware — Electronic opening and closing sanitary tapware*

koniec náhľadu – text ďalej pokračuje v platenej verzii STN